



Chapter 2

Use Case: Retrieving Worker Information

from Worker Management API Guide for RUN
Powered by ADP

Published on
Mar 11, 2020, 03:47 PM

Last modified
Sep 08, 2023, 01:11 PM





ADP Copyright Information

ADP, the ADP logo, and Always Designing for People are trademarks of ADP, Inc.

Windows is a registered trademark of the Microsoft Corporation.

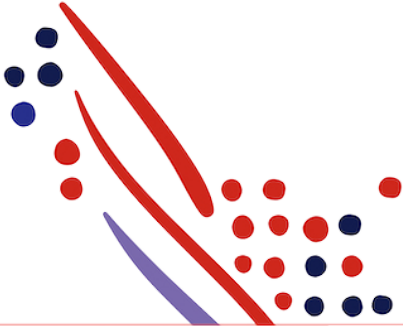
All other trademarks are the property of their respective owners.

Copyright © 2023 ADP, Inc. ADP Proprietary and Confidential - All Rights Reserved. These materials may not be reproduced in any format without the express written permission of ADP, Inc.

These materials may not be reproduced in any format without the express written permission of ADP, Inc. ADP provides this publication "as is" without warranty of any kind, either expressed or implied, including, but not limited to, the implied warranties of merchantability or fitness for a particular purpose. ADP is not responsible for any technical inaccuracies or typographical errors which may be contained in this publication. Changes are periodically made to the information herein, and such changes will be incorporated in new editions of this publication. ADP may make improvements and/or changes in the product and/or the programmes described in this publication.

Published on
Mar 11, 2020, 03:47 PM

Published on
Sep 08, 2023, 01:11 PM



Chapter Contents

Chapter 2

Worker Management API Guide for RUN Powered by ADP

- Use Case Description
- API Usage
- Application Scope
- Supported Actors
- Request Header Parameters
- Sensitive Information Unmasking
- Supported OData Query Options
- Sequence of Interactions
- Data Dictionary
- Responses

Use Case: Retrieving Worker Information

Use Case Description

This use case retrieves a single worker or a collection of workers with PII or SPI data.

API Usage

Method	URI	Description	Sample Response Payload
GET	/hr/v2/workers	Requests the list of all available workers and all the employee details in an organization.	Retrieve-Full-workers-information-http-200-response.json
GET	/hr/v2/workers/{aoid}	Requests a specific worker.	Retrieve-individual-worker-information-http-200-response.json
GET	/hr/v2/workers/meta	Requests meta for workers.	Retrieve-Workers-meta-http-200-response.json

Application Scope

The canonical uniform resource identifier (URI) corresponding to the API needs to be added in the Consumer Application Registry (CAR) for the subscription following which a user can access this API and make successful API calls.

The following canonical needs to be added to your application scope to enable this use case:

`/hr/workerInformationManagement/workerManagement/workerProfileManagement/worker.read`

Supported Actors

Request Parameter roleCode Value	Usage
Practitioner	Retrieves a list of all available worker information as a practitioner. A system user is considered a practitioner.

Request Header Parameters

Parameter Name	Required (Y/N)	Usage	Sample
Accept	Y	To reveal masked data.	application/json;masked=false

Sensitive Information Unmasking

To establish compliance with data security best-practices, our Worker V2 API only returns the month and day of the **Birth Date** and the last four numbers of the **SSN**, unless you specify you want to see the values unmasked in your Hypertext Transfer Protocol (HTTP) request. To see these values unmasked, simply add the following header to your HTTP request:

Accept: application/json;masked=false

Supported OData Query Options

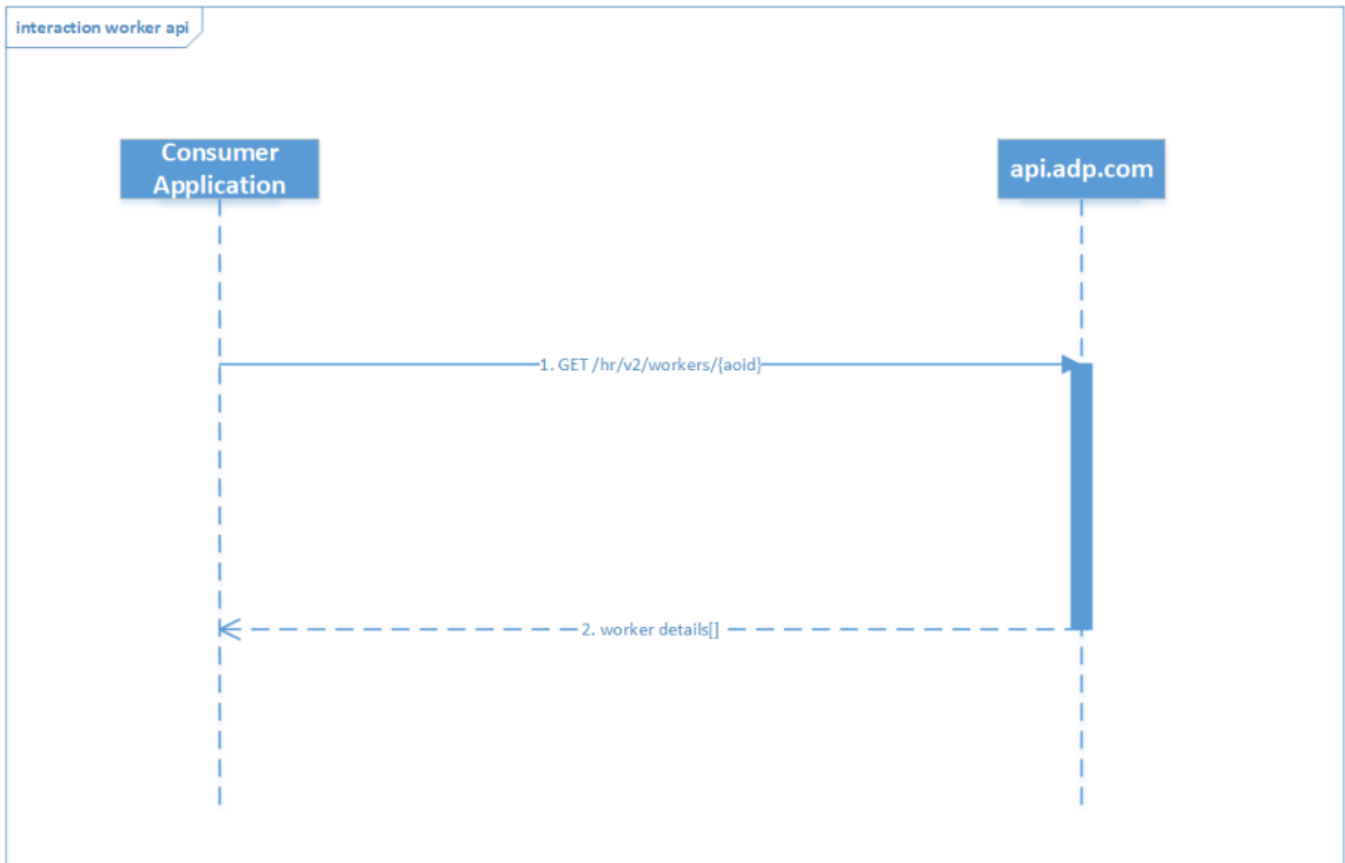
This use case supports Query String Options as defined by Open Data Protocol (OData). For more information about OData, see the [Introduction to ADP API Open Data Protocol](#).

Query String Option	Description	Example
\$top	Requests the number of items in the queried collection to be included in the result.	hr/v2/workes?\$top=100
\$skip	Specifies the number of items in the queried collection to be skipped and not included in the result.	/hr/v2/workers?\$top=100&\$skip=100
\$select	Selects a subset of properties to include in the response.	/hr/v2/workers? \$select=workers/person/legalName,workers/person/legalAddress
count	Returns the total number of employees in response	/hr/v2/workers?count=true
\$filter	Filters a collection of resources addressed by a request Uniform Resource Locator (URL). Only items for which the expression evaluates to true are included in the response.	/hr/v2/workers? \$filter=workerID/idValue lt '4'

Note

Supported OData parameter (e.g. **\$select**, **\$filter**) information can be retrieved from the worker meta call response.

Sequence of Interactions



The following are the sequence of interactions to retrieve worker information for a collection of workers:

1. Your consumer application makes a request for an initial collection of workers to the ADP API endpoint.
2. The ADP API endpoint responds to your consumer application with a collection of workers.
3. Your consumer application makes a request for a subsequent collection of workers to the ADP API endpoint.
4. The ADP API endpoint responds to your consumer application with a collection of workers.

Your consumer application repeats steps 3 and 4 until a 204 No Content HTTP response status code is returned.

Data Dictionary

See [Chapter 8 - Data Dictionary](#).

Responses

You may encounter exceptions outside your common success scenarios. You must account for these exceptions during your initial development.

For more information, see [API Common Exceptions and Tips for Handling](#).

Response Code	Condition	messageTxt	GitHub Sample Request Payload	GitHub Sample Response Payload	Tips to Handle
200 OK	Retrieves all the available workers the requester is authorized to view.	NA	NA	Retrieve-Full-workers-information-http-200-response.json	

Response Code	Condition	messageTxt	GitHub Sample Request Payload	GitHub Sample Response Payload	Tips to Handle
200 OK	Retrieves single worker's details.	NA	NA	Retrieve-individual-worker-information-http-200-response.json	
200 OK	Retrieves partial masked data (SSN and DOB).	NA	NA	Retrieve-partial-masked-data-for-DOB-and-SSN-http-200-response	
200 OK	Retrieves Unmasked data (SSN and DOB).	NA	NA	Retrieve-Unmasked-data-for-DOB-and-SSN-http-200-response.json	To retrieve the unmasked data in the API response, include the header Accept:application/json;masked=false in the headers of the API Request call.
200 OK	Retrieves the top five employees.	NA	NA	Retrieve-top-5-employees-http-200-response.json	
200 OK	Retrieves the worker response using the top and skip parameters.	NA	NA	worker-skipResponse-200-response.json	When the end of the page is reached using top and skip , the Workers response gives a 200 status code with an empty body.
200 OK	Retrieves the employee details based on the select query. For example: /hr/v2/workers? \$select=workers/person/legalName,workers/person/legalAddress	NA	NA	Retrieve-employee-details-based-on-select-query-http-200-response.json	

Response Code	Condition	messageTxt	GitHub Sample Request Payload	GitHub Sample Response Payload	Tips to Handle
200 OK	Retrieves the employee details based on the filter query. For example: hr/v2/workers? \$filter=workerID/idValue eq'21'	NA	NA	Retrieve-employee-details-based-on-filter-http-200-response.json	
400 Bad Request	Incorrect query parameters in the request.	"userMessage": { "messageTxt": "Expression expected at position 0 in '/workers/AssociateOID eq 'G4073G9Z62SL2NFM'." }	NA	workers-incorrect-QueryParam-400-response.json	User to provide valid query parameters in the request.
404 Not Found	Invalid Associate Object ID (AOID) in the request.	"userMessage": { "messageTxt": "The specified resource does not exist or you do not have access to it." }	NA	workers-invalidAOID-404-response.json	User to provide the valid AOID in the request.