



Guide

Time and Labor Management (TLM) Import Work Schedule API Guide for ADP Workforce Now

Published on
May 19, 2020 1:40PM

Last modified
Feb 16, 2022 3:56PM





ADP Copyright Information

ADP, the ADP logo, and Always Designing for People are trademarks of ADP, Inc.

Windows is a registered trademark of the Microsoft Corporation.

All other trademarks are the property of their respective owners.

Copyright © 2022 ADP, Inc. ADP Proprietary and Confidential - All Rights Reserved. These materials may not be reproduced in any format without the express written permission of ADP, Inc.

These materials may not be reproduced in any format without the express written permission of ADP, Inc. ADP provides this publication "as is" without warranty of any kind, either expressed or implied, including, but not limited to, the implied warranties of merchantability or fitness for a particular purpose. ADP is not responsible for any technical inaccuracies or typographical errors which may be contained in this publication. Changes are periodically made to the information herein, and such changes will be incorporated in new editions of this publication. ADP may make improvements and/or changes in the product and/or the programmes described in this publication.

Published on
May 19, 2020 1:40PM

Last modified
Feb 16, 2022 3:56PM

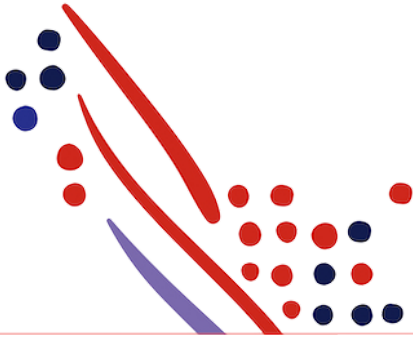


Table of Contents

Chapter 1

About this API

Summary

What's New

May 2020

Supported Product Version and Customer Base

Required Setup Steps

Postman Collection

Sequence of Interactions

Chapter 2

Use Case: Adding Multiple Schedule Entries

Use Case Description

API Usage

Making a Work Schedule Add, Change, or Remove Async Call

Application Scope

Supported Actors

Request Header Parameters

Response Header Parameters

Data Dictionary

Responses

Chapter 3

Use Case: Changing Multiple Schedule Entries

Use Case Description

API Usage

Application Scope

Supported Actors

Request Header Parameters

Response Header Parameters

Data Dictionary

Responses

Chapter 4

Use Case: Removing Multiple Schedule Entries

Use Case Description

API Usage
Application Scope
Supported Actors
Request Header Parameters
Data Dictionary
Responses

Chapter 5

Known Issues and Limitations

Issue 1: Meta API not working

Impacted APIs

Issue Description

Suggested Workaround

Issue 2: Returns 200 OK as a Status Code when the Request is partially failed or failed

Impacted APIs

Issue Description

Suggested Workaround

Issue 3: There is no API to retrieve the imported work schedule entry deals, especially when changed or removed

Impacted APIs

Issue Description

Suggested Workaround

Issue 4: Event notifications are Not Supported when work schedule entries are added, changed, or removed

Impacted APIs

Suggested Workaround

About this API

Summary

The Time and Labor Management (TLM) Import Work Schedule Application Programming Interface (API) is used to upload employees' schedule entry data. This is data that comprises of an Employee Position's Schedule.

What's New

In this section, revisions to the Work Assignment API and this guide will be announced.

May 2020

This guide was made available in the HTML format along with being able to download a PDF version.

Supported Product Version and Customer Base

The TLM Import Work Schedule API supports ADP Workforce Now and TLM versions 20.0.0.0 and above.

Required Setup Steps

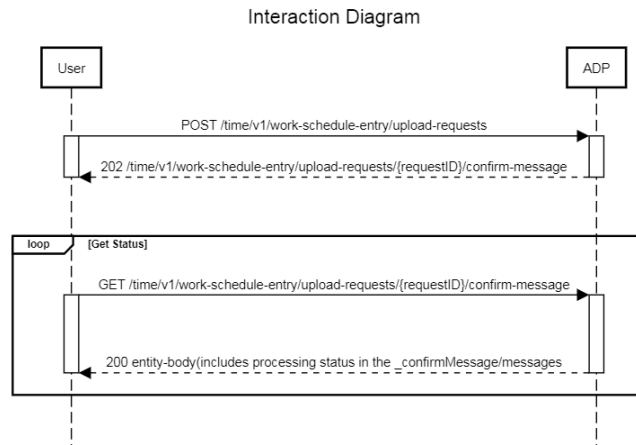
A set of Employee Positions configured to use Time within ADP Workforce Now must be available before the API can be used.

Postman Collection

Postman allows you to import a collection of APIs, created by others, so you can try them out. For more information on Postman, see [Making Your First API Call Using Postman](#).

To download API collections for the TLM Import Work Schedule API from the ADP GitHub library and import them to Postman, go to [TLM Work Schedule Import API Postman Collection](#).

Sequence of Interactions



The following are the steps shown in the previous diagram:

1. Your consumer application makes a request with the payload to the ADP API endpoint using the **POST /time/v1/work-schedule-entry/upload-requests** API to add, change, or remove the work schedule entries of an employee.
2. The ADP API endpoint responds to your consumer application with a status code of 202 Accepted and a response having the **requestID** (and link) of **/time/v1/work-schedule-entry/upload-requests/86182c0af41b4aefa9fbc3eceaac35dc/confirm-message** to get the processing status.
3. With the **requestID** obtained in the above call, your consumer application makes a request to the ADP API endpoint using the **GET /time/v1/work-schedule-entry/upload-requests/{requestID}/confirm-message** uniform resource identifier (URI) with required headers.
4. The ADP API endpoint responds to your consumer application with the status details of the adding, changing, or removing of work schedule entries for an employee.

Chapter 2

Use Case: Adding Multiple Schedule Entries

Use Case Description

This use case adds a new Schedule Entry using **/workScheduleEntries/.modificationTypeCode:added**.

API Usage

Method	URI	Description	Sample Request Payload	Sample Response Payload
POST	/time/v1/work-schedule-entry/upload-requests	Used to add work schedules for an employee. Note: To add a work schedule entry, the field _modificationTypeCode should be passed as shown in the following request payload: "_modificationTypeCode": "added".	POST-Add-scheduleentry-MA-shift-in-day-http-202-request.json	POST-Add-scheduleentry-MA-shift-in-day-http-202-response.json
GET	/time/v1/work-schedule-	Used to get the status of	NA	GET-status-scheduleentry-

	entry/upload-requests/{request-id}/confirm-message Note: {request-id} is obtained in the response of POST call.	imported work schedule, which is added in the previous call.		MA-shift-in-day-http-200-response.json
--	---	--	--	--

Making a Work Schedule Add, Change, or Remove Async Call

The **TLM Import Work Schedule** API is an asynchronous call. The following steps need to be followed for an add, change, or remove to a work schedule.

1. Make a POST API call with the request Payload using **/time/v1/work-schedule-entry/upload-requests**.



Result

This will return a **requestID** which will be unique for each request. The response will also have a link to the status API call and a status code of 202 Accepted.



Info

The status code of 202 Accepted indicates the Payload has been accepted and stored for further processing by ADP Marketplace.

Response of POST call:

```
{ "_confirmMessage": { "processingStatus": "received", "requestID": "3186fe903dfe4394930825f9b33c77be", "links": [ { "method": "GET", "rel": "alternate", "mediaType": "application/json", "href": "/time/v1/work-schedule-entry/upload-requests/3186fe903dfe4394930825f9b33c77be/confirm-message" } ], "messageDateTime": "2019-08-27 10:19:22", "requestStatus": "success" }
```

2. As it is an Async call, with the requestID received in the response of the POST call, make a GET API call with the URI as **/time/v1/work-schedule-entry/upload-requests/{request-id}/confirm-message**. The response of GET call is a status code of 200 OK.



Note

The GET API requires the header **Accept:application/json**, otherwise the API throws 500 Internal Server error.



Info

Status code 200 indicates Call is Successful with more details in response body.

The **requestStatus** can have following values:

- failure
- partial-failure
- success

Response of GET call:

```
{ "_confirmMessage": { "processingStatus": "completed", "requestID": "fffc926ad053468fba0e8ba7d2ff3cc2", "links": [ { "method": "GET", "rel": "alternate", "mediaType": "application/json", "href": "/time/v1/work-schedule-entry/upload-requests/fffc926ad053468fba0e8ba7d2ff3cc2/confirm-message" } ], "messageDateTime": "2019-08-26 11:23:51", "requestStatus": "success" } }
```

The previous steps are repeated for adding, changing, or removing a work schedule entry.

Application Scope

The canonical uniform resource URI corresponding to the API needs to be added in the Consumer Application Registry (CAR) for the subscription following which a user can access this API and make successful API calls.

The following canonical needs to be added to your application scope to enable this use case:

/time/timeLaborManagement/scheduleManagement/workScheduleUpload/scheduleEntry.upload

**/time/timeLaborManagement/scheduleManagement/workScheduleUpload/scheduleEntry.upload.
status.read**

Supported Actors

Request Parameter roleCode Value	Usage
Practitioner	Practitioner can add new Work Schedule Entries for employees. A system user is considered a practitioner.

Request Header Parameters

None, in addition to the ADP standard header parameters.

Response Header Parameters

None, in addition to the ADP standard header parameters.

Data Dictionary

Resources listed in the following table can be accessed through the ADP Workforce Now user interface (UI) by selecting **People > Time & Attendance > Schedules**.

Schema Location	Field Name	Is Required (Y/N)	Note
/workScheduleEntries /payCode	Pay Code	N	Describes the schedule entry pay code.
/workScheduleEntries /payCode/code			
/workScheduleEntries /associateOID	Not Displayed	Y	Indicates the Associate Object ID (AOID) to whom schedule entries are added.
/workScheduleEntries /dateTimePeriod	Not Displayed	Y	
/workScheduleEntries /dateTimePeriod/start DateTime	IN TIME	Y	Indicates the string representation of the start date-time value. Follows the ISO-8601:2000 format. For example: 2019-04-16T08:00:00.000-04:00
/workScheduleEntries /dateTimePeriod/endD ateTime	OUT TIME	Y	Specifies the string representation of the start date-time value. Follows the ISO-8601:2000 format. For example: 2019-04-16T16:00:00.000-04:00
/workScheduleEntries /_modificationTypeCod e	Not Displayed	Y	Adds a work schedule entry using _modificationTypeCode:added .
/workScheduleEntries /externalReferenceID	Not Displayed	Y	Indicates the Entry ID to be added. This Entry ID belongs to the caller system.
/workScheduleEntries /externalReferenceID/i d			
/workScheduleEntries /comments	Note	N	Indicates the Schedule Entry Comments/Note , if any. The length is restricted to 512.
/workScheduleEntries /comments/ commentText			
/workScheduleEntries /earningAllocations	Department, Meal Plan	N	Indicates if the Schedule Entry has any earnings allocations assigned. For example: Department, Meal Plan, ShiftRule, and so on. Each shift can have only one

			Department, Job, Meal Plan, ShiftRule assigned.
/workScheduleEntries /earningAllocations/all ocationTypeCode			
/workScheduleEntries /earningAllocations/all ocationTypeCode/cod e			
/workScheduleEntries /earningAllocations/all ocationCode		N	Indicates the valid Code for respective earning allocation type Code . Each shift can have only one Department, Job, Meal Plan, ShiftRule assigned. Sample values are as follows: <pre>{ "allocationTypeCode": { "code": "Department" }, "allocationCode": { "code": "003000" } }</pre>
/workScheduleEntries /earningAllocations/all ocationCode/code			

Responses

You may encounter exceptions outside your common success scenarios. You must account for these exceptions during your initial development.

For more information, see [API Common Exceptions and Tips for Handling](#).

Response Code	Method	Condition	Message Text	GitHub Sample Request Payload	GitHub Sample Response Payload	Tips to Handle
202 Accepted	POST	Adds a work schedule entry for a single associate with multiple shifts in a day.	NA	POST-Add-schedule-entry-SA-multishifts-in-day-http-202-request.json	POST-Add-schedule-entry-SA-multishifts-in-day-http-202-response.json	
200 OK	GET		NA	NA	GET-status-schedule-entry-SA-multishifts-in-day-http-200-response.json	
202 Accepted	POST	Adds a work schedule entry for a single associate with the same shift for multiple days.	NA	POST-Add-schedule-entry-SA-sameshift-in-multi-days-http-202-request.json	POST-Add-scheduleentry-SA-sameshift-in-multi-days-http-202-response.json	

200 OK	GET		NA	NA	GET-status-scheduleentry-SA-sameshift-in-multi-days-http-200-response.json	
202 Accepted	POST	Adds a work schedule entry for multiple associates with one shift in a day.	NA	POST-Add-schedule entry-MA-shift-in-day-http-202-request.json	POST-Add-schedule entry-MA-shift-in-day-http-202-response.json	
200 OK	GET		NA	NA	GET-status-schedule entry-MA-shift-in-day-http-200-response.json	
202 Accepted	POST	Adds a work schedule entry for multiple associates with one shift for multiple days.	NA	POST-Add-schedule entry-MA-shift-multi-days-http-202-request.json	POST-Add-schedule entry-MA-shift-multi-days-http-202-response.json	
200 OK	GET		NA	NA	GET-status-schedule entry-MA-shift-multi-days-http-200-response.json	
202 Accepted	POST	Adds a schedule entry with an existing externalReferenceID .	NA	POST-Add-existing-external ReferenceID-http-202-request.json	POST-Add-existing-external ReferenceID-http-202-response.json	
200 OK	GET		"messages": [{ "resourceID": "43", "resource Reference": "external ReferenceID", "messageText": "Invalid Request", "messageType Code": "error", "messageCode": "exp.Invalid Request" }]	NA	GET-status-existing-external ReferenceID-http-200-response.json	An external ReferenceID already exists with ADP. Make sure a valid external ReferenceID is passed in the request.
202 Accepted	POST		NA	POST-Add-external ReferenceID-empty-http-202-request.json	POST-Add-external ReferenceID-empty-http-202-response.json	

200 OK	GET		"messages": [{ "messageText": "For input string: \\", "messageType Code": "error" }]	NA	GET-status-externalReferenceID-empty-http-200-response.json	Make sure a valid externalReferenceID is provided.
202 Accepted	POST		NA	POST-Add-Invalid-AOID-http-202-request.json	POST-Add-Invalid-AOID-http-202-response.json	
200 OK	GET	Adds a schedule entry with an invalid AOID.	"messages": [{ "resourceID": "01", "resource Reference": "noPosition", "messageText": "The specified associate does not have any active positions that are configured for mobile access.", "messageType Code": "error", "messageCode": "exp_NoMobilePo sitionsFound" }]	NA	GET-status-Invalid-AOID-http-200-response.json	
202 Accepted	POST		NA			
200 OK	GET	Adds a schedule entry with an invalid startDateTime and endDateTime .	messages": [{ "messageText": "27-08- 2019T08:00:00.0 00-04:00", "messageType Code": "error" }],			
202 Accepted	POST	Adds a schedule entry with enddate less than the startdate .	NA	POST-Add-enddate-lessthan-startdate-http-202-request.json	POST-Add-enddate-lessthan-startdate-http-202-response.json	
200 OK	GET		"messages": [{ "resourceID": "311", "resource Reference": "startDateTime", "messageText": "Schedule Start Date must be less than or equal to Schedule End Date", "messageType Code": "error", "messageCode": "err_mobileapp_ Less_StartEnd Date" }	NA	GET-status-enddate-lessthan-startdate-http-200-response.json	

202 Accepted	POST	Adds a schedule entry with endTime less than the startTime .	NA	POST-Add-endDate Time-less-than-startDate Time-http-202-request.json	POST-Add-endDate Time-less-than-startDate Time-http-202-response.json	
200 OK	GET		"messages": [{ "resourceID": "311", "resourceReference": "endTime", "messageText": "Schedule In Time must be less than Schedule Out Time", "messageTypeCode": "error", "messageCode": "err_mobileapp_Less_InOutTime" }],	NA	GET-status-endDate Time-less-than-startDate Time-http-200-response.json	
202 Accepted	POST	Adds a schedule entry with a shift that lasted more than 24 hours.	NA	POST-Add-Date Time-more-than-24-http-202-request.json	POST-Add-Date Time-more-than-24-http-202-response.json	
200 OK	GET		"messages": [{ "resourceID": "411", "resourceReference": "endDate", "messageText": "Date range cannot exceed 24 hours.", "messageTypeCode": "error", "messageCode": "err_DateRangeTooLarge" }]	NA	GET-status-Date Time-more-than-24-http-200-response.json	
202 Accepted	POST	Adds a schedule entry with shifts that overlap with the existing shift.	NA	POST-Add-Overlapping- with-existing-shift-http-202-request.json	POST-Add-Overlapping- with-existing-shift-http-202-response.json	
200 OK	GET		"messages": [{ "resourceID": "313", "messageText": "Scheduled shift times overlap with an existing scheduled shift.", "messageTypeCode": "error", "messageCode": "	NA	GET-status-Overlapping- with-existing-shift-http-200-response.json	Check whether there are existing shifts with the same timings for an employee.

			"err_Schedule ConflictOverlap" },			
202 Accepted	POST	Adds a schedule entry with an invalid payCodeID .	NA	POST-Add-Invalid-Paycode-http-202-request.json	POST-Add-Invalid-Paycode-http-202-response.json	
200 OK	GET		"messages": [{ "resourceID": "314", "resource Reference": "payCodeId", "messageText": "ABSE does not exist.", "messageType Code": "error", "messageCode": "err_DoesNot Exists-A1" }]	NA	GET-status-Invalid-Paycode-http-200-response.json	Make sure a valid payCodeID is passed in the request.
202 Accepted	POST	Adds a schedule entry with an invalid departmentID .	NA	POST-Add-Invalid-Department-http-202-request.json	POST-Add-Invalid-Department-http-202-response.json	
200 OK	GET		"messages": [{ "resourceID": "302", "resource Reference": "departmentId", "messageText": "007000 does not exist.", "messageType Code": "error", "messageCode": "err_DoesNot Exists-A1" }]	NA	GET-status-Invalid-Department-http-200-response.json	Make sure a valid departmentID is passed in the request.
202 Accepted	POST	Adds a schedule entry with an invalid _modificationType Code .	NA	POST-Add-Invalid-modificationType Code-http-202-request.json	POST-Add-Invalid-modificationType Code-http-202-response.json	
200 OK	GET		"messages": [{ "resourceID": "201", "messageText": "_modificationType Code does not exist.", "messageType Code": "error", "messageCode": "err_DoesNot Exists-A1", "resource Reference":	NA	GET-status-Overlapping-with-existing-shift-http-200-response.json	

			"_modificationTypeCode": },			
202 Accepted	POST		NA	POST-Add-Text-morethan512-http-202-request.json	POST-Add-Text-morethan512-http-202-response.json	
200 OK	GET	Adds a schedule entry with a comment of more than 512 characters.	"messages": [{ "resourceID": "101", "resourceReference": "comments. commentText", "messageText": "Note must be between 1 and 512 characters.", "messageTypeCode": "error", "messageCode": "err_InvalidNoteLength" }]	NA	GET-status-Text-morethan512-http-202-response.json	

Chapter 3

Use Case: Changing Multiple Schedule Entries

Use Case Description

This use case changes an existing Schedule Entry using **/workScheduleEntries/_modificationTypeCode:changed**.

API Usage

Method	URI	Description	GitHub Sample Request Payload	GitHub Sample Response Payload
POST	/time/v1/work-schedule-entry/upload-requests	Used to update a work schedule entry of an employee. Note: To update a work schedule entry, the field _modificationTypeCode should be passed as shown in the following request payload: "_modificationTypeCode": "changed"	POST-Change-scheduleentry-MA-shift-in-day-http-202-request.json	POST-Change-scheduleentry-MA-shift-in-day-http-202-response.json
GET	/time/v1/work-schedule-entry/upload-requests/{request-id}/confirm-message	Used to get the status of an updated work	NA	GET-status-scheduleentry-MA-shift-

	Note: {request-id} is obtained in the response of the POST call.	schedule entry, which is changed in the previous call.		in-day-http-200-response.json
--	---	--	--	---

Application Scope

The following canonical needs to be added to your application scope to enable this use case:

/time/timeLaborManagement/scheduleManagement/workScheduleUpload/scheduleEntry.upload
/time/timeLaborManagement/scheduleManagement/workScheduleUpload/scheduleEntry.upload.status.read

Supported Actors

Request Parameter roleCode Value	Usage
Practitioner	Practitioner can update Schedule Entries of an employee or employees.

Request Header Parameters

None, in addition to the ADP standard header parameters.

Response Header Parameters

None, in addition to the ADP standard header parameters.

Data Dictionary

Resources listed in the following table can be accessed through the ADP Workforce Now UI by selecting **People > Time & Attendance > Schedules**.

Schema Location	Field Name	Is Required (Y/N)	Note
/workScheduleEntries/payCode	Pay Code	N	Describes the schedule entry pay code.
/workScheduleEntries/payCode/code			

/workScheduleEntries/associateOID	Not Displayed	Y	Indicates the Associate OID (AOID) for whom schedule entries are changed.
/workScheduleEntries/ dateTimePeriod	Not Displayed	Y	
/workScheduleEntries/ dateTimePeriod/startDateTime	IN TIME	Y	Indicates the string representation of the start date-time value. Follows the ISO-8601:2000 format. For example: 2019-04-16T08:00:00.000-04:00
/workScheduleEntries/ dateTimePeriod/endDateTime	OUT TIME	Y	Specifies the string representation of the start date-time value. Follows the ISO-8601:2000 format. For example: 2019-04-16T16:00:00.000-04:00
/workScheduleEntries/ _modificationTypeCode	Not Displayed	Y	Changes a work schedule entry using _modificationTypeCode : changed .
/workScheduleEntries/externalReferenceID	Not Displayed	Y	Indicates the Entry ID to be modified. This Entry ID belongs to caller system.
/workScheduleEntries/externalReferenceID/id			
/workScheduleEntries/comments	Note	N	Indicates the Schedule Entry Comments/Note , if any. The length is restricted to 512.
/workScheduleEntries/comments/ commentText			
/workScheduleEntries/earningAllocations	Department, Meal Plan	N	Indicates if the Schedule Entry has any earnings allocations assigned. For example: Department, Meal Plan, ShiftRule, and so on. Each shift can have only one Department, Job, Meal Plan, ShiftRule assigned.
/workScheduleEntries/earningAllocations/allocationTypeCode			
/workScheduleEntries/earningAllocations/allocationTypeCode/code			
/workScheduleEntries/earningAllocations/allocationCode		N	Indicates the valid Code for respective earning allocation type Code. Each shift can have only one Department, Job, Meal Plan, ShiftRule assigned. Sample values: { "allocationTypeCode": { "code": "Department" }, "allocationCode": { "code": "003000" } }
/workScheduleEntries/earningAllocations/allocationCode/code			

Responses

You may encounter exceptions outside your common success scenarios. You must account for these exceptions during your initial development.

For more information, see [API Common Exceptions and Tips for Handling](#).

Response Code	Method	Condition	Message Text	GitHub Sample Request Payload	GitHub Sample Response Payload
202 Accepted	POST	Updates an employee's work schedule entry shift for the day.	NA	POST-Change-schedule-entry-SA-multishifts-in-day-http-202-request.json	POST-Change-schedule-entry-SA-multishifts-in-day-http-202-response.json
200 OK	GET		NA	NA	GET-status-schedule-entry-SA-multishifts-in-day-http-200-response.json
202 Accepted	POST	Updates a work schedule entry for a single associate with the same shift for multiple days.	NA	POST-Change-scheduleentry-SA-sameshift-in-multi-days-http-202-request.json	POST-Change-scheduleentry-SA-sameshift-in-multi-days-http-202-response.json
200 OK	GET		NA	NA	GET-status-scheduleentry-SA-sameshift-in-multi-days-http-200-response.json
202 Accepted	POST	Updates a work schedule entry for multiple associates with one shift in a day.	NA	POST-Change-scheduleentry-MA-shift-in-day-http-202-request.json	POST-Change-scheduleentry-MA-shift-in-day-http-202-response.json
200 OK	GET		NA	NA	GET-status-scheduleentry-MA-shift-in-day-http-200-response.json
202 Accepted	POST	Updates a work schedule entry for multiple associates with one shift for multiple days.	NA	POST-Change-scheduleentry-MA-shift-multi-days-http-202-request.json	POST-Change-scheduleentry-MA-shift-multi-days-http-202-response.json
200 OK	GET		NA	NA	GET-status-scheduleentry-MA-shift-multi-days-http-200-response.json
202 Accepted	POST	Update a schedule entry with an empty externalReferenceID .	NA	POST-Change-externalReferenceID-empty-http-202-request.json	POST-Change-externalReferenceID-empty-http-202-response.json
200 OK	GET		"messages": [{ "messageText": "For input string: \"\\\"\", "messageType Code": "error" }]	NA	GET-status-externalReferenceID-empty-http-200-response.json
202 Accepted	POST	Updates a schedule	NA	POST-Change-Invalid-	POST-Change-Invalid-

		entry with an invalid AOID.		AOID-http-202-request.json	AOID-http-202-response.json
200 OK	GET		"messages": [{ "resourceID": "91", "messageText": "The specified associate does not have any active positions that are configured for mobile access.", "messageType Code": "error", "messageCode": "exp_NoMobile PositionsFound", "resource Reference": "noPosition" }]	NA	GET-status-Invalid-AOID-http-200-response.json
202 Accepted	POST		NA	POST-Change-endDateTime-lessthan-startDateTime-http-202-request.json	POST-Change-endDateTime-lessthan-startDateTime-http-202-response.json
200 OK	GET	Updates a schedule entry with endDateTime less than the startDateTime.	"messages": [{ "resourceID": "91", "resource Reference": "startDateTime", "messageText": "Schedule Start Date must be less than or equal to Schedule End Date", "messageType Code": "error", "messageCode": "err_mobileapp_Less_StartEnd Date" }, { "resourceID": "92", "resource Reference": "endDateTime", "messageText": "Schedule In Time must be less than Schedule Out Time", "messageType Code": "error", "messageCode": "err_mobileapp_Less_InOutTime" }],	NA	GET-status-endDate Time-lessthan-startDate Time-http-200-response.json
202 Accepted	POST	Updates a schedule entry with an invalid payCodeId and departmentId.	NA	POST-Change-Invalid-Paycode-and-dept-http-202-request.json	POST-Change-Invalid-Paycode-and-dept-http-202-response.json
200 OK	GET		"messages": [{ "resourceID": "91", "messageText": "0040000 does not exist.", "messageTypeCode": }]	NA	GET-status-Invalid-Paycode-and-dept-http-200-response.json

			<pre> "error", "messageCode": "err.DoesNotExists- A1", "resourceReference": "departmentId" }, { "resourceID": "91", "resourceReference": "payCodeId", "messageText": "JURY123 does not exist.", "messageTypeCode": "error", "messageCode": "err.DoesNotExists- A1" }], </pre>		
202 Accepted	POST	Updates the schedule entry with an invalid _modificationTypeCode .	NA	POST-Change-Invalid- modificationTypeCod e-http-202- request.json	POST-Change-Invalid- modificationTypeCod e-http-202- response.json
200 OK	GET		<pre> "messages": [{ "resourceID": "91", "resourceReference": "_modificationTypeCo de", "messageText": "_modificationTypeCo de does not exist.", "messageTypeCode": "error", "messageCode": "err.DoesNotExists- A1" } </pre>	NA	GET-Status-Invalid- modificationTypeCod e-http-200- response.json
202 Accepted	POST	Updates a schedule entry with a comment of more than 512 characters.	NA	POST-Change-Text- morethan512-http- 202-request.json	POST-Change-Text- morethan512-http- 202-response.json
200 OK	GET		<pre> "messages": [{ "resourceID": "91", "resourceReference": "comments.comment Text", "messageText": "Note must be between 1 and 512 characters.", "messageTypeCode": "error", "messageCode": "err.InvalidNote Length" } </pre>	NA	GET-status-Text- morethan512-http- 202-response.json
202 Accepted	POST	Updates work schedule entry details for a single associate with the same shift for multiple days.	NA	POST-Change- scheduleentry-SA- sameshift-in-multi- days-http-202- request.json	POST-Change- scheduleentry-SA- sameshift-in-multi- days-http-202- response.json
200 OK	GET		NA	NA	GET-status- scheduleentry-SA- sameshift-in-multi- days-http-200- response.json

202 Accepted	POST	Updates work schedule entry details for multiple associates with a day shift.	NA	POST-Change-scheduleentry-MA-shift-in-day-http-202-request.json	POST-Change-scheduleentry-MA-shift-in-day-http-202-response.json
200 OK	GET		NA	NA	GET-status-scheduleentry-MA-shift-in-day-http-200-response.json
202 Accepted	POST	Updates work schedule entry details for multiple associates with a shift for multiple days.	NA	POST-Change-scheduleentry-MA-shift-multi-days-http-202-request.json	POST-Change-scheduleentry-MA-shift-multi-days-http-202-response.json
200 OK	GET		NA	NA	GET-status-scheduleentry-MA-shift-multi-days-http-200-response.json
202 Accepted	POST	Updates a schedule entry when the externalReferenceID is empty.	NA	POST-Change-externalReferenceID-empty-http-202-request.json	POST-Change-externalReferenceID-empty-http-202-response.json
200 OK	GET		"messages": [{ "messageText": "For input string: \"\\\"\", "messageTypeCode": "error" }]	NA	GET-status-externalReferenceID-empty-http-200-response.json
202 Accepted	POST	Updates a schedule entry with an invalid AOID.	NA	POST-Change-Invalid-AOID-http-202-request.json	POST-Change-Invalid-AOID-http-202-response.json
200 OK	GET		"messages": [{ "resourceID": "91", "messageText": "The specified associate does not have any active positions that are configured for mobile access.", "messageTypeCode": "error", "messageCode": "exp_NoMobilePositionsFound", "resourceReference": "noPosition" }]	NA	GET-status-Invalid-AOID-http-200-response.json
202 Accepted	POST	Updates a schedule entry when endDateTime is less than the startDateTime.	NA	POST-Change-endDateTime-less-than-startDateTime-http-202-request.json	POST-Change-endDateTime-less-than-startDateTime-http-202-response.json
200 OK	GET		"messages": [{ "resourceID": "91", "resourceReference": "startDateTime", "messageText": "Schedule Start Date must be less than or	NA	GET-status-endDateTime-less-than-startDateTime-http-200-response.json

			<p>equal to Schedule End Date", "messageTypeCode": "error", "messageCode": "err_mobileapp_Less_S tartEndDate" }, { "resourceID": "92", "resourceReference": "endTime", "messageText": "Schedule In Time must be less than Schedule Out Time", "messageTypeCode": "error", "messageCode": "err_mobileapp_Less_In OutTime" } }],</p>		
--	--	--	---	--	--

Chapter 4

Use Case: Removing Multiple Schedule Entries

Use Case Description

This use case removes an existing Schedule Entry using **/workScheduleEntries/_modificationTypeCode:removed**.

API Usage

Method	URI	Description	GitHub Sample Request Payload	GitHub Sample Response Payload
POST	/time/v1/work-schedule-entry/upload-requests	Used to remove a work schedule entry of an employee. Note: To remove a work schedule entry, the field _modificationTypeCode s should be passed in the request payload as follows: _modificationTypeCode": "removed"	POST-Remove-scheduleentry-MA-shift-in-day-http-202-request.json	POST-Remove-scheduleentry-MA-shift-in-day-http-202-response.json
GET	/time/v1/work-schedule-entry/upload-requests/{request-id}/confirm-message Note: { request-id } is obtained in the response of POST call.	Used to get the status of a removed work schedule entries which are removed in the previous call.	NA	GET-status-scheduleentry-MA-shift-in-day-http-200-response.json

Application Scope

The following canonical needs to be added to your application scope to enable this use case:

/time/timeLaborManagement/scheduleManagement/workScheduleUpload/scheduleEntry.upload
/time/timeLaborManagement/scheduleManagement/workScheduleUpload/scheduleEntry.upload.
status.read

Supported Actors

Request Parameter roleCode Value	Usage
Practitioner	Practitioners can remove Schedule Entries of all employees or an employee. A system user is considered a practitioner.

Request Header Parameters

None, in addition to the ADP standard header parameters.

Data Dictionary

Resources listed in the following table can be accessed through the ADP Workforce Now UI by selecting **People > Time & Attendance > Schedules**.

Schema Location	Field Name	Is Required (Y/N)	Note
/workScheduleEntries/associateOID	Not Displayed	Y	Indicates the AOID.
/workScheduleEntries/_modificationTypeCode	Not Displayed	Y	Removes a work schedule entry using _modificationTypeCode:removed .
/workScheduleEntries/externalReferenceID	Not Displayed	Y	Indicates the Entry ID to be removed. This Entry ID belongs to caller's system.
/workScheduleEntries/externalReferenceID/id			

Responses

You may encounter exceptions outside your common success scenarios. You must account for these exceptions during your initial development.

For more information, see [API Common Exceptions and Tips for Handling](#).

Response Code	Method	Condition	Message Text	GitHub Sample Request Payload	GitHub Sample Response Payload
202 Accepted	POST	Removes a work schedule entry for a day shift employee.	NA	POST-Remove-schedule-entry-SA-multishifts-in-day-http-202-request.json	POST-Remove-schedule-entry-SA-multishifts-in-day-http-202-response.json
200 OK	GET		NA	NA	GET-status-schedule-entry-SA-multishifts-in-day-http-200-response.json
202 Accepted	POST	Removes work schedule entry details for a single associate who has a shift for multiple days.	NA	POST-Remove-scheduleentry-SA-sameshift-in-multi-days-http-202-request.json	POST-Remove-scheduleentry-SA-sameshift-in-multi-days-http-202-response.json
200 OK	GET		NA	NA	GET-status-scheduleentry-SA-sameshift-in-multi-days-http-200-response.json
202 Accepted	POST	Removes work schedule entry details for multiple associates with a day shift.	NA	POST-Remove-scheduleentry-MA-shift-in-day-http-202-request.json	POST-Remove-scheduleentry-MA-shift-in-day-http-202-response.json
200 OK	GET		NA	NA	GET-status-scheduleentry-MA-shift-in-day-http-200-response.json
202 Accepted	POST	Removes work schedule entry details for multiple associates with a shift for multiple days.	NA	POST-Remove-scheduleentry-MA-shift-multi-days-http-202-request.json	POST-Remove-scheduleentry-MA-shift-multi-days-http-202-response.json
200 OK	GET		NA	NA	GET-status-scheduleentry-MA-shift-multi-days-http-200-response.json
202 Accepted	POST	Removes a schedule entry when the externalReferenceID is invalid.	NA	POST-Remove-externalReferenceID-invalid-http-202-request.json	POST-Remove-externalReferenceID-invalid-http-202-response.json
200 OK	GET		messages": [{ "resourceID": "01", "resourceReference": "externalReferenceID", "messageText": "Invalid Request",	NA	GET-status-externalReferenceID-invalid-http-200-response.json

			"messageTypeCode": "error", "messageCode": "exp_InvalidRequest" }		
202 Accepted	POST	Removes a schedule entry when the externalReferenceID is empty.	NA	POST-Remove-externalReferenceID-empty-http-202-request.json	POST-Remove-externalReferenceID-empty-http-202-response.json
200 OK	GET		"messages": [{ "messageText": "For input string: \"\\\"\", "messageTypeCode": "error" }],	NA	GET-status-externalReferenceID-empty-http-200-response.json
202 Accepted	POST	Removes a schedule entry with an invalid AOID.	NA	POST-Remove-Invalid-AOID-http-202-request.json	POST-Remove-Invalid-AOID-http-202-response.json
200 OK	GET		messages": [{ "resourceID": "401", "resourceReference": "noPosition", "messageText": "The specified associate does not have any active positions that are configured for mobile access.", "messageTypeCode": "error", "messageCode": "exp_NoMobilePositionsFound" }],	NA	GET-status-Invalid-AOID-http-200-response.json
202 Accepted	POST	Removes a schedule entry with an invalid _modificationType Code .	NA	POST-Remove-Invalid-modificationTypeCode-http-202-request.json	POST-Remove-Invalid-modificationTypeCode-http-202-response.json
200 OK	GET	Removes a schedule entry with an invalid _modificationType Code .	"messages": [{ "resourceID": "401", "resourceReference": "_modificationTypeCode", "messageText": "_modificationTypeCode does not exist.", "messageTypeCode": "error", "messageCode": "err_DoesNotExists-A1" },	NA	GET-Status-Invalid-modificationTypeCode-http-200-response.json

Chapter 5

Known Issues and Limitations

Issue 1: Meta API not working

Impacted APIs

Method	URI	roleCode Value
POST	/time/v1/work-schedule-entry/upload-requests/meta	Practitioner

Issue Description

The meta is not supported for the previous API.

Suggested Workaround

There are no workarounds available.

Issue 2: Returns 200 OK as a Status Code when the Request is partially failed or failed

Impacted APIs

Method	URI	roleCode Value
POST	/time/v1/work-schedule-entry/upload-requests/{request-id}/confirm-message	Practitioner

Issue Description

The TLM Import Work Schedule API returns a 200 OK status code when there are partial and complete failures in the response when adding, changing, or removing work schedule entries.

For example:

- When there is a schedule entry which is overlapping with the existing shift, the response describes the failure, but the status code remains 200 OK.
- When the **payCodeID** and **departmentID** are invalid, the response describes the failure, but the status code remains 200 OK.

Suggested Workaround

There are no workarounds available.

Issue 3: There is no API to retrieve the imported work schedule entry deals, especially when changed or removed

Impacted APIs

Method	URI	roleCode Value
GET	/time/v1/work-schedule-entry/upload-requests/{request-id}/confirm-message	Practitioner

Issue Description

To change or remove a work schedule entry, the **externalReferenceID** needs to be passed in the Request payload. But there is NO GET API supported to retrieve the work schedule details of an employee.

Suggested Workaround

There are no workarounds available.

Issue 4: Event notifications are Not Supported when work schedule entries are added, changed, or removed

Impacted APIs

Method	URI	roleCode Value
POST	/time/v1/work-schedule-entry/upload-requests	Practitioner

Suggested Workaround

There are no workarounds available.