

Chapter 2

Use Case: Retrieving the Pay Data Input Details

from Payroll Data Input API Guide for RUN Powered by
ADP Guide

Published on
Mar 03, 2020 12:35PM

Last modified
Aug 25, 2022 5:51AM





ADP Copyright Information

ADP, the ADP logo, and Always Designing for People are trademarks of ADP, Inc.

Windows is a registered trademark of the Microsoft Corporation.

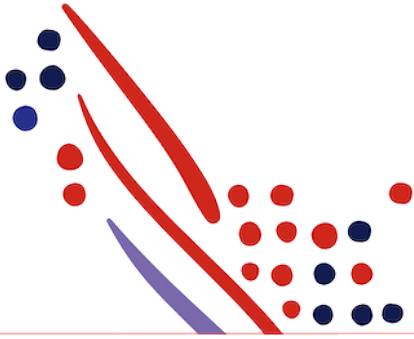
All other trademarks are the property of their respective owners.

Copyright © 2022 ADP, Inc. ADP Proprietary and Confidential - All Rights Reserved. These materials may not be reproduced in any format without the express written permission of ADP, Inc.

These materials may not be reproduced in any format without the express written permission of ADP, Inc. ADP provides this publication "as is" without warranty of any kind, either expressed or implied, including, but not limited to, the implied warranties of merchantability or fitness for a particular purpose. ADP is not responsible for any technical inaccuracies or typographical errors which may be contained in this publication. Changes are periodically made to the information herein, and such changes will be incorporated in new editions of this publication. ADP may make improvements and/or changes in the product and/or the programmes described in this publication.

Published on
Mar 03, 2020 12:35PM

Last modified
Aug 25, 2022 5:51AM



Chapter Contents

Chapter 2

Use Case: Retrieving the Pay Data Input Details

Use Case Description

API Usage

Application Scope

Supported Actors

Request Header Parameters

Sequence of Interactions

Data Dictionary

Responses

Chapter 2

Use Case: Retrieving the Pay Data Input Details

Use Case Description

This use case requests the list of all available pay data input that the requester is authorized to view. The Payroll Data Input API exposes values found in the RUN Powered by ADP UI by selecting **Home > Time Sheet > Time Sheet Import**.

API Usage

Method	URI	Description	GitHub Sample Request Payload
GET	/payroll/v1/pay-data-input	Requests the list of all available pay data input the requester is authorized to view.	NA

Application Scope

The canonical Uniform Resource Indicator (URI) corresponding to the API needs to be added in the Consumer Application Registry (CAR) for the subscription following which a user can access this API and make successful API calls.

The following canonical needs to be added to your application scope to enable this use case:

`/payroll/payrollManagement/payrollProcessing/payDataInputManagement/payDataInput.read`

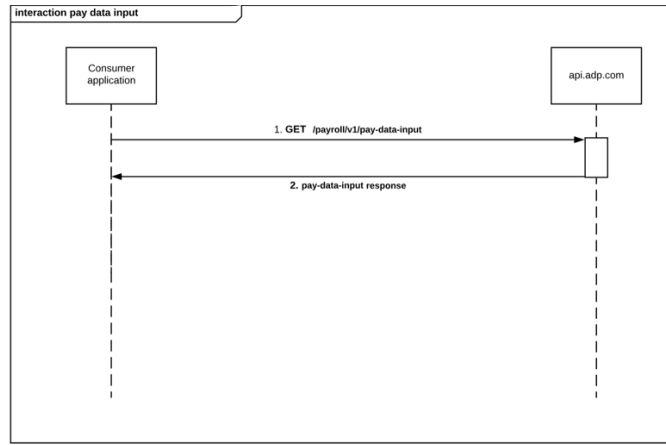
Supported Actors

Request Parameter roleCode Value	Usage
practitioner	Retrieves an employee's pay data input details. A system user is considered a practitioner.

Request Header Parameters

Apart from the ADP standard header parameters, there are no request header parameters.

Sequence of Interactions



The following are the steps shown in the previous diagram:

1. Your consumer application makes a request to the ADP API endpoint to GET the Pay Data input for a worker.
2. The ADP API endpoint responds to your consumer application with single worker Pay Data input information.

Data Dictionary

Resources listed in the following table can be accessed in the RUN Powered by ADP UI by selecting **Home > Time Sheet > Time Sheet Import > Select the Pay Frequency**.

Schema Location	Field Name in RUN Powered by ADP
/payDataInput/payeePayInputs/associateOID	NA
/payDataInput/payeePayInputs/workerID/idValue	NA
/payDataInput/payeePayInputs/payPeriodStartDate	Pay period start
/payDataInput/payeePayInputs/payPeriodEndDate	Pay period end
/payDataInput/payeePayInputs/payrollProfilePayInputs/payInputs/earningInputs/earningCode/codeValue	NA
/payDataInput/payeePayInputs/payrollProfilePayInputs/payInputs/earningInputs/rate/rateValue	Rate/Salary Amount Import

/payDataInput/payeePayInputs/payrollProfilePayInputs/payInputs/earningInputs/rate/currencyCode	NA
/payDataInput/payeePayInputs/payrollProfilePayInputs/payInputs/earningInputs/rate/baseUnitCode/codeValue	NA
/payDataInput/payeePayInputs/payrollProfilePayInputs/payInputs/earningInputs/rate/baseUnitCode/shortName	NA
/payDataInput/payeePayInputs/payrollProfilePayInputs/payInputs/earningInputs/numberOfHours	Regular Hours Import
/payDataInput/payeePayInputs/payrollProfilePayInputs/payInputs/payAllocation/allocationTypeCode/codeValue	NA
/payDataInput/payeePayInputs/payrollProfilePayInputs/payInputs/payAllocation/allocationID	Department
/payDataInput/payeePayInputs/payNumber	NA
/payrollGroupCode/codeValue	Pay frequency
/itemID	NA

Responses

You may encounter exceptions outside your common success scenarios. You must account for these exceptions during your initial development.

For more information, see [API Common Exceptions and Tips for Handling](#).

Response Code	Response Condition	message Txt	GitHub Sample Request Payload	GitHub Sample Response Payload
200 OK	Retrieve the pay data input batch details when there are	NA	NA	No pay data batch entries Response

200 OK	no entries. Retrieve the pay data batch details.	NA	NA	pay data batch details Response
--------	---	----	----	---