



Chapter 2

Use Case: Retrieving Payroll Instructions (Payroll Instructions API)

from Deduction Instruction API Guide for ADP Workforce Now Guide

Published on
Mar 26, 2020 5:28PM

Last modified
Sep 22, 2022 2:07AM



ADP Copyright Information

ADP, the ADP logo, and Always Designing for People are trademarks of ADP, Inc.

Windows is a registered trademark of the Microsoft Corporation.

All other trademarks are the property of their respective owners.

Copyright © 2022 ADP, Inc. ADP Proprietary and Confidential - All Rights Reserved. These materials may not be reproduced in any format without the express written permission of ADP, Inc.

These materials may not be reproduced in any format without the express written permission of ADP, Inc. ADP provides this publication "as is" without warranty of any kind, either expressed or implied, including, but not limited to, the implied warranties of merchantability or fitness for a particular purpose. ADP is not responsible for any technical inaccuracies or typographical errors which may be contained in this publication. Changes are periodically made to the information herein, and such changes will be incorporated in new editions of this publication. ADP may make improvements and/or changes in the product and/or the programmes described in this publication.

Published on
Mar 26, 2020 5:28PM

Last modified
Sep 22, 2022 2:07AM



Chapter Contents

Chapter 2

Use Case: Retrieving Payroll Instructions (Payroll Instructions API)

- Use Case Description
- API Usage
- Application Scope
- Supported Actors
- Request Header Parameters
- Sequence of Interactions
- Data Dictionary
- Responses

Use Case: Retrieving Payroll Instructions (Payroll Instructions API)

Use Case Description

This use case returns the list of all available payroll instructions the requester is authorized to view for a given worker.

This API exposes values found in the ADP Workforce Now UI by selecting **People > Pay > Pay Profile > Deductions**. You must provide the Associate Organization ID (AOID) of the desired worker in the AOID Uniform Resource Identifier (URI) parameter.



Tip

To retrieve the ADP worker's unique Associate Object Identifier (AOID), your application can first retrieve all workers using GET /hr/v2/workers and creating the mapping between the two systems.

For more details, see the [Worker Information Management API Guide for ADP Workforce Now](#).

API Usage

For API related information please refer [Worker Payroll Instructions](#) under API Explorer.

Method	URI	Description	Note
GET	/payroll/v1/workers/{aoid}/ payroll-instructions	Returns the list of all active payroll instructions for an employee until the current effective date.	ADP Workforce Now supports workers with multiple positions. When a worker has multiple positions, the Payroll Instructions API returns all active deductions and garnishments for all payroll file numbers for a given worker. Use the GET Workers API to retrieve employee position status.
GET	/payroll/v1/workers/{aoid}/payroll-instructions/{payroll-instruction-id}	Returns deductions based on the pay-distribution-id . Tip: When an associate has more than one position, each position has a unique payrollGroupCode and payrollFileNumber . The user can retrieve all the payroll instructions for all positions. If the user wants to retrieve payroll instructions for only one position, the user can make use of the GET /payroll/v1/workers/{aoid}/payroll-instructions/{payroll-instruction-id} . The API is called by passing the {payroll-instruction-id} of the particular position.	Important: Currently, this functionality is not working for Canada and cross border clients.
GET	/payroll/v1/workers/{aoid}/payroll-instructions ?asOfDate={YYYY-MM-DD}	Returns the list of all active deductions of an employee until the effective date provided in the asOfDate parameter.	
GET	/payroll/v1/workers/{aoid}/payroll-instructions ?inactive=true	Returns the list of all active and inactive deductions for an employee until the current effective date.	Important: Currently, this functionality is not working for Canada and cross border clients.
GET	/payroll/v1/workers/{aoid}/payroll-	Returns the list of all active and inactive	

	<code>instructions ?asofDate={YYYY-MM-DD}&inactive=true</code>	deductions for an employee until the effective date provided in the asOfDate parameter.	
--	--	--	--



Note

Parameter 'Inactive=true' returns both Inactive and active deductions. There is a similar behavior in the UI.

Application Scope

The canonical URI corresponding to the API needs to be added in the Consumer Application Registry (CAR) for the subscription following which a user can access the Deduction Instruction API and make successful API calls.

The following canonical needs to be added to your application scope to enable this use case:

/payroll/payrollManagement/payrollInstructionManagement/workerPayrollInstructionManagement/workerPayrollInstructions.read

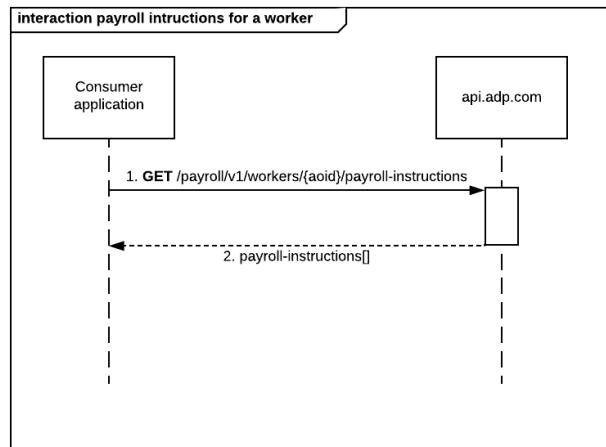
Supported Actors

Request Parameter roleCode Value	Usage
practitioner	Retrieves payroll instructions as a practitioner. A practitioner can view, start, stop, or change a deduction. A system user is considered a practitioner.

Request Header Parameters

None, in addition to the ADP standard header parameters.

Sequence of Interactions



The following are the steps shown in the previous diagram:

1. Your consumer application makes a request to the ADP API endpoint to GET payroll-instructions for a worker.
2. The ADP API endpoint responds to your consumer application with single worker payroll information.

Data Dictionary

The fields listed in the following table can be found in the ADP Workforce Now UI by selecting **People > Pay > Deductions**.

Payroll API Response Location	Field Name	Note
/payrollInstructions/generalDeductionInstructions	Not Displayed	
/payrollInstructions/generalDeductionInstructions/itemID	Not Displayed	Indicates the deduction Item ID. Each deduction has one item ID generated.
/payrollInstructions/generalDeductionInstructions/deductionCode/codeValue	Deduction Code	Indicates the Deduction Code.
/payrollInstructions/generalDeductionInstructions/deductionRate/rateValue	Deduction Amount	Indicates the deduction amount.
/payrollInstructions/generalDeductionInstructions/deductionStartDate	Effective Date	Indicates the deduction effective date.
/payrollInstructions/generalDeductionInstructions	Deduction Goal	Indicates the Goal ID.

ctions /deductionGoal/goalID		
/payrollInstructions/g eneralDeductionInstru ctions /deductionGoal/goalB alanceAmount/amount tValue	Balance	Indicates the Goal balance amount.
/payrollInstructions/g eneralDeductionInstru ctions /deductionGoal/goalLi mitAmount/amountVa lue	Deduction Goal Limit	Indicates the Goal limit amount.
/payrollInstructions/g eneralDeductionInstru ctions /inactiveIndicator	Not Displayed	Indicates the status of the deduction. <ul style="list-style-type: none"> • True indicates active status. • False indicates Inactive status.
/payrollInstructions/g arnishmentInstruction s	Not Displayed	
/payrollInstructions/g arnishmentInstruction s/itemID	Not Displayed	Indicates the garnishment item ID. Each garnishment has one itemID generated.
/payrollInstructions/g arnishmentInstruction s/workerLien	Not Displayed	
/payrollInstructions/g arnishmentInstruction s/workerLien /itemID	Not Displayed	Indicates the workerLien ID.
/payrollInstructions/g arnishmentInstruction s/workerLien /lienNumber	Lien Number	Indicates the worker Lien number.
/payrollInstructions/g arnishmentInstruction s/workerLien /lienTypeCode/ codeVa lue	Not Displayed	Indicates the lien type code.
/payrollInstructions/g arnishmentInstruction s/workerLien /lienTypeCode/shortN ame	Lien Type	Indicates the lien name. For example, Garnishment.
/payrollInstructions/g arnishmentInstruction s/workerLien /lienSubTypeCode/co deValue	Not Displayed	Indicates the lien code value.
/payrollInstructions/g arnishmentInstruction s/workerLien /lienSubTypeCode/sh ortName	Lien Subtype	Indicates the lien subtype name.

/payrollInstructions/garnishmentInstructions/workerLien/lienStatusCode/effectiveDate	Lien Start Date	Indicates the lien start date.
/payrollInstructions/garnishmentInstructions/workerLien/lienStatusCode/codeValue	Not Displayed	
/payrollInstructions/garnishmentInstructions/workerLien/lienStatusCode/shortName	Lien Status	Indicates the lien status. Values are Active , Complete , and Inactive .
/payrollInstructions/garnishmentInstructions/workerLien/courtOrder/caseNumber	Case # / Lien ID	Indicates the Case or Lien ID.
/payrollInstructions/garnishmentInstructions/workerLien/courtOrder/issuingJurisdiction	Not Displayed	
/payrollInstructions/garnishmentInstructions/workerLien/courtOrder/issuingJurisdiction/countrySubdivisionLevel1	Court Order State	Indicates the court order state.
/payrollInstructions/garnishmentInstructions/workerLien/courtOrder/issuingJurisdiction/countrySubdivisionLevel1/subdivisionType	City, State, ZIP	Indicates the City, State, and ZIP.
/payrollInstructions/garnishmentInstructions/workerLien/courtOrder/issuingJurisdiction/countrySubdivisionLevel1/codeValue	Not Displayed	
/payrollInstructions/garnishmentInstructions/workerLien/courtOrder/issuingJurisdiction/countrySubdivisionLevel1/shortName	Not Displayed	
/payrollInstructions/garnishmentInstructions/workerLien/courtOrder/lienMaritalStatusCode	Not Displayed	

/payrollInstructions/garnishmentInstructions/workerLien/courtOrder/lienMaritalStatusCode/codeValue	Not Displayed	
/payrollInstructions/garnishmentInstructions/workerLien/courtOrder/lienMaritalStatusCode/shortName	Marital Status	Indicates the marital status.
/payrollInstructions/garnishmentInstructions/workerLien/fullServiceClientIndicator	Not Displayed	
/payrollInstructions/garnishmentInstructions/workerLien/allowanceQuantity	Not Displayed	
/payrollInstructions/garnishmentInstructions/workerLien/fundsDisbursement	Not Displayed	
/payrollInstructions/garnishmentInstructions/workerLien/fundsDisbursement/disbursementFees	Funds Disbursement Schedule	Indicates the disbursement fees.
/payrollInstructions/garnishmentInstructions/workerLien/fundsDisbursement/disbursementMessages	Funds Disbursement Check Stub Messages	
/payrollInstructions/garnishmentInstructions/garnishmentAmount		
/payrollInstructions/garnishmentInstructions/garnishmentAmount/amountValue	Deduction Amount	Indicates the garnishment amount.
/payrollInstructions/garnishmentInstructions/garnishmentStartDate	Deduction Effective On	Indicates the garnishment effective date.
/payrollInstructions/payrollFileNumber	Not Displayed	
/payrollInstructions/payrollAgreementID	Not Displayed	

/payrollInstructions/payrollGroupCode	Not Displayed	
/payrollInstructions/payrollGroupCode/codeValue	Not Displayed	
/payrollInstructions/payrollGroupCode/shortName	Not Displayed	
/payrollInstructions/workAssignmentStatus	Not Displayed	
/payrollInstructions/workAssignmentStatus/effectiveDate	Effective Date	
/payrollInstructions/workAssignmentStatus/codeValue	Status	

Responses

For API related information please refer [Worker Payroll Instructions](#) under API Explorer.

Response Code	Response Condition	message txt	Note
200 OK	Retrieves all the payroll deductions until the current effective date.		
200 OK	Retrieves all the payroll deductions until the provided asOfDate parameter.		
200 OK	Retrieves all the payroll deductions until the provided asOfDate parameter.		
200 OK	Retrieves any specific deduction passing deduction itemID .		
200 OK	Retrieves all the inactive deductions until the current effectiveDate .		
200 OK	Retrieves all the inactive deductions until the future effectiveDate .		
200 OK	Verifies the response when the employee does not have any deduction.		
200 OK	Verifies the response for future date when the employee does not have any deductions.		
204 No Content	Verifies the response when the employee does not get paid from ADP Workforce Now.		There will not be any response in this case.
400 Bad Request	Verifies the response when		

	the itemID passed in the URI is invalid.		
500 Internal Server Error	Verifies the response when the associate ID passed in the request URI is invalid.	"userMessage": {"messageTxt": "Label not found, missing following key: Exception in the requestHTTP 404 Not Found"}	



Tip

To update deductions for a given worker AOID using the POST API (as described in [Chapter 3 - Use Case: Using the General Deduction Instruction Start API](#), [Chapter 4 - Use Case: Changing a General Deduction Instruction](#), and [Chapter 5 - Use Case: Using the General Deduction Instruction Stop API](#) the payload needs to send a few values. These values can be obtained only by the GET `/payroll/v1/workers/{associateoid}/payroll-instructions` API. The following values need to be used from the response of the Payroll Instructions API:

- payrollFileNumber
- payrollAgreementID
- itemID