



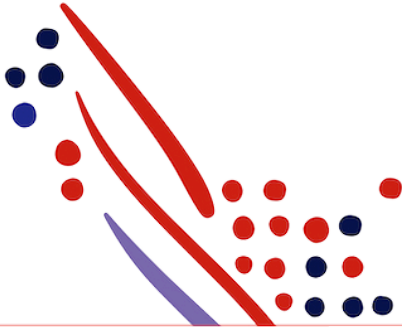
Guide

Talent Profile Certifications API Guide for ADP Workforce-depreciated from july 2024

Published on
May 25, 2022, 10:47 AM

Last modified
Jun 26, 2024, 03:19 PM





ADP Copyright Information

ADP, the ADP logo, and Always Designing for People are trademarks of ADP, Inc.

Windows is a registered trademark of the Microsoft Corporation.

All other trademarks are the property of their respective owners.

Copyright © 2024 ADP, Inc. ADP Proprietary and Confidential - All Rights Reserved. These materials may not be reproduced in any format without the express written permission of ADP, Inc.

These materials may not be reproduced in any format without the express written permission of ADP, Inc. ADP provides this publication "as is" without warranty of any kind, either expressed or implied, including, but not limited to, the implied warranties of merchantability or fitness for a particular purpose. ADP is not responsible for any technical inaccuracies or typographical errors which may be contained in this publication. Changes are periodically made to the information herein, and such changes will be incorporated in new editions of this publication. ADP may make improvements and/or changes in the product and/or the programmes described in this publication.

Published on
May 25, 2022, 10:47 AM

Published on
Jun 26, 2024, 03:19 PM

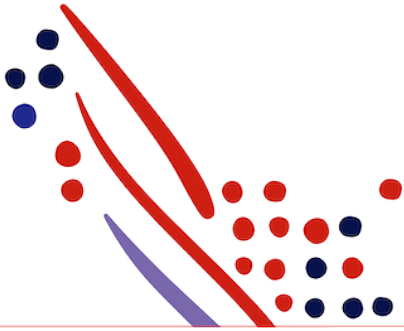


Table of Contents

Chapter 1

About this API

What's new in this Guide?

July 2020

Postman Collection

Chapter 2

Use Case: Retrieving an Associate's Certifications

Use Case Description

API Usage

Application Scope

Sequence of Interactions

Data Dictionary

Responses

Chapter 3

Use Case: Updating an Associate's Certifications

Use Case Description

API Usage

Application Scope

Sequence of Interactions

Requirement

Responses

Chapter 4

Use Case: Retrieving the certifications for all associates

Use Case Description

API Usage

Application Scope

Sequence of Interactions

Responses

Chapter 1

About this API

What's new in this Guide?

In this section, we will announce any new revisions to the Talent Profile - Certifications Application Programming Interface (API) and this guide.

July 2020

- Initial creation of this document

Process Overview

The following table shows how your data connector application would be used by a client.

	Actor	Task Description
1	Client Practitioner	Trigger the API-based data exchange between your application and ADP Workforce.
2	Your application	Retrieve worker information details based on your needs.
3	Client Practitioner	Verify the Information in ADP Workforce.

Postman Collection

Postman allows you to import a collection of APIs, created by others, so you can try them out. For more information on Postman, see [Making Your First API Call Using Postman](#). To download API collections for the Talent Profile - Certifications API from the ADP GitHub library and import them to Postman, go to [Talent Profile - Certifications API Postman Collection](#).

Chapter 2

Use Case: Retrieving an Associate's Certifications

Use Case Description

The Talent Profile - Certifications APIs support the management of an associate's certifications. The certification is listed along with information about IDs, effective and expiration dates.

API Usage

Method	Uniform Resource Identifier (URI)	Description	GitHub Sample Response Payload
GET	/talent/v2/associates/{workerid}/associate-certifications	To retrieve the certifications for a given employee (ADP Workforce key can be used as associateOID)	associate-certifications-http-200-response.json

Application Scope

The canonical URI corresponding to the Talent Profile - Certifications API needs to be added in the Consumer Application Registry (CAR) for the subscription following which a user can access this API and make successful API calls.

The following canonical needs to be added to your application scope to enable this use case:

`/talent/workerTalentManagement/workerKSAOCManagement/certificationManagement/certification.read`

Sequence of Interactions



The following are the steps shown in the previous diagram:

1. The consumer application makes a request to the ADP API endpoint for the Talent Profile - Certifications API
2. The ADP API endpoint responds to the consumer application with the processing result.

Data Dictionary

The Talent Profile - Certifications API exposes the GET Method. The following is the schema of the response payload.

Canonical Field	Workforce Field	Label
/associateCertifications/workerID/idValue	sleutel	sleutel
/associateCertifications/certificationDescription	wp_cer_beschrijving	Beschrijving:
/associateCertifications/certificationNameCode/codeValue	wp_cer	Certificaat:
/associateCertifications/lastIssueDate	wp_cer_afgifte	Afgiftedatum:
/associateCertifications/certificationID/idValue	wp_cer_nummer	Certificaatnummer:
/associateCertifications/expirationDate	wp_cer_verloop	Verlooptdatum:

Responses

You may encounter exceptions outside your common success scenarios. You must account for these exceptions during your initial development. For more information, see [API Common Exceptions and Tips for Handling](#).

Response Code	Response Condition	GitHub Sample Response Payload
200 OK	Retrieve employee certifications.	associate-certifications-http-200-response.json
200 OK	Returns an empty list of time off requests for the associate.	Empty Body

Chapter 3

Use Case: Updating an Associate's Certifications

Use Case Description

The Talent Profile - Certifications APIs supports adding a new certificate for the given employee.

API Usage

Method	Uniform Resource Identifier (URI)	Description	GitHub Sample Response Payload
POST	/talent/v2/associates/{workerid}/associate-certifications	To post a certification for a given employee (ADP Workforce key can be used as associateOID)	No Payload '201 Created' returned

Application Scope

The canonical URI corresponding to the Talent Profile - Certifications API needs to be added in the Consumer Application Registry (CAR) for the subscription following which a user can access this API and make successful API calls.

The following canonical needs to be added to your application scope to enable this use case:

`/talent/workerTalentManagement/workerKSAOCManagement/certificationManagement/certification.add`

Sequence of Interactions




The following are the steps shown in the previous diagram:

1. The consumer application posts a request to the ADP API endpoint for the Talent Profile - Certifications API
2. The ADP API endpoint responds to the consumer application with the processing result.

Requirement

To successfully POST an associate certificate, the added certificate definition needs to exist in ADP Workforce. An example is shown below. The reference key ('referentie') can be used for certificates from other systems with non-alphanumeric symbols in their codes (like the dash in WORD-01).


Selecteer een bestaand certificaat of geef een code op voor een nieuw certificaat


Certificaat: * 

Referentie:

Omschrijving: *

Categorie:

Datum ingang: * 

Datum einde: 

☒ **Certificaat is actief**

Signalering: * ☐ **dagen** ☒ **weken** ☐ **maanden**

Opties:

- ☐ Onbeperkte geldigheidsduur
- ☐ Kopie verplicht toevoegen
- ☐ Signaal aan werknemer
- ☐ Verifiëren

Verwijderen: ☐

Responses

You may encounter exceptions outside your common success scenarios. You must account for these exceptions during your initial development. For more information, see [API Common Exceptions and Tips for Handling](#).

Response Code	Response Condition	GitHub Sample Response Payload
201 OK	Certificate successfully added	No Payload '201 Created' returned
400 Bad Request	No certificate code was provided	WP CER-missing-http-400-response.json
400 Bad Request	No issue date was provided	WP CER AFGIFTE-missing-http-400-response.json

Response Code	Response Condition	GitHub Sample Response Payload
400 Bad Request	Issue date is in the future. This is not allowed by Workforce	WP CER AFGIFTE-inthefuture-http-400-response.json
400 Bad Request	Unknown certificate code provided	WP CER-incorrect-http-400-response.json
400 Bad Request	No expiration date provided	WP CER VERLOOP-missing-http-400-response.json
400 Bad Request	Invalid date format for expiration date	WP CER VERLOOP-incorrect-http-400-response.json
400 Bad Request	The expiration date is before the issue date	WP CER AFGIFTE-mismatch-http-400-response.json
400 Bad Request	Invalid date format for issue date is provided	WP CER AFGIFTE-incorrect-http-400-response.json
404 Not Found	Associate unknown/not found	associate-not-found-http-404-response.json

Chapter 4

Use Case: Retrieving the certifications for all associates

Use Case Description

The Talent Profile - Certifications APIs support the management of an associate's certifications. The certification is listed along with information about IDs, effective and expiration dates.

API Usage

Method	Uniform Resource Identifier (URI)	Description	GitHub Sample Response Payload
GET	/talent/v2/associate-certifications	To retrieve the certifications for all employees.	associate-certifications-http-200-response.json

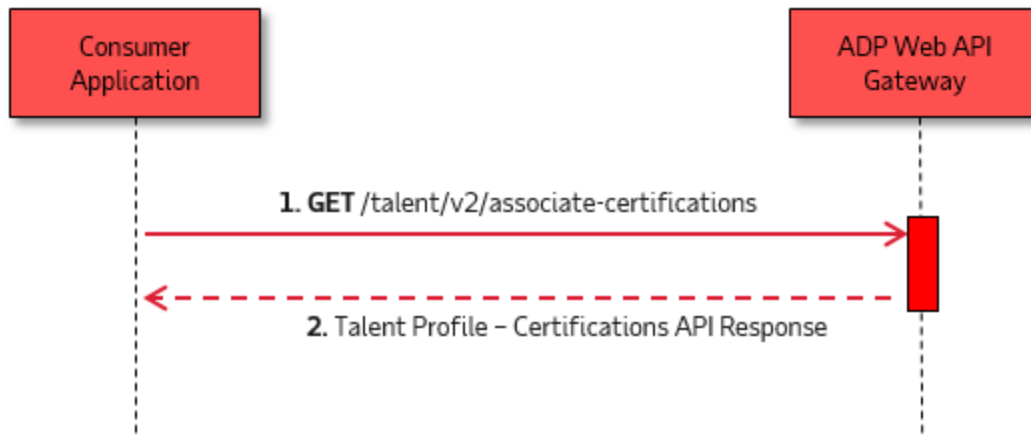
Application Scope

The canonical URI corresponding to the Talent Profile - Certifications API needs to be added in the Consumer Application Registry (CAR) for the subscription following which a user can access this API and make successful API calls.

The following canonical needs to be added to your application scope to enable this use case:

`/talent/workerTalentManagement/workerKSAOCManagement/certificationManagement/associate.certification.read`

Sequence of Interactions



The following are the steps shown in the previous diagram:

1. The consumer application makes a request to the ADP API endpoint for the Talent Profile - Certifications API
2. The ADP API endpoint responds to the consumer application with the processing result.

Responses

You may encounter exceptions outside your common success scenarios. You must account for these exceptions during your initial development. For more information, see [API Common Exceptions and Tips for Handling](#).

Response Code	Response Condition	GitHub Sample Response Payload
200 OK	Retrieving the Certifications for all Associates.	all-associates-certifications-http-200-response.json