



Guide

# Pay Distribution API Guide for iHCM

Published on  
May 23, 2022 10:30AM

Last modified  
Apr 04, 2023 8:08PM



## ADP Copyright Information

ADP, the ADP logo, and Always Designing for People are trademarks of ADP, Inc.

Windows is a registered trademark of the Microsoft Corporation.

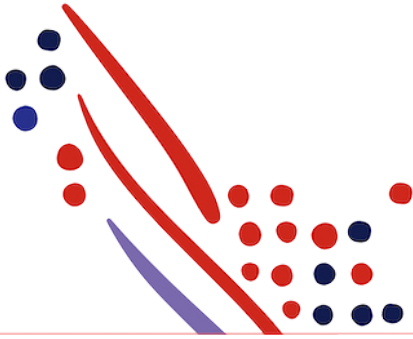
All other trademarks are the property of their respective owners.

Copyright © 2023 ADP, Inc. ADP Proprietary and Confidential - All Rights Reserved. These materials may not be reproduced in any format without the express written permission of ADP, Inc.

These materials may not be reproduced in any format without the express written permission of ADP, Inc. ADP provides this publication "as is" without warranty of any kind, either expressed or implied, including, but not limited to, the implied warranties of merchantability or fitness for a particular purpose. ADP is not responsible for any technical inaccuracies or typographical errors which may be contained in this publication. Changes are periodically made to the information herein, and such changes will be incorporated in new editions of this publication. ADP may make improvements and/or changes in the product and/or the programmes described in this publication.

Published on  
May 23, 2022 10:30AM

Last modified  
Apr 04, 2023 8:08PM



# Table of Contents

## Chapter 1

### About this API

- Process Overview
- What's New in this guide
- Postman Collection
- Before You Begin

## Chapter 2

### Use Case: Retrieving all the Pay Distribution details added for an employee from iHCM

- Use Case Description
- API Usage

- Application Scope
- Request End Point Parameter
- Supported OData Query Options
- Data Entitlements
- Sequence of Interactions
- Data Dictionary
- Responses

## Chapter 3

### Use Case: Retrieving the Pay Distribution details for an employee with a Pay Distribution ID from iHCM

- Use Case Description
- API Usage

- Application Scope
- Request End Point Parameter
- Supported OData Query Options

Data Entitlements  
Sequence of Interactions  
Data Dictionary

Responses

#### Chapter 4

##### **Use Case: Synchronising Pay Distribution using Notifications**

Use Case Description  
API Usage

#### Chapter 5

##### **Use Case: Creating & Updating the Pay Distribution details for an employee in iHCM**

Use Case Description  
API Usage

Application Scope  
Request End Point Parameter  
Supported OData Query Options

Data Entitlements  
Sequence of Interactions  
Data Dictionary

Responses

#### Chapter 6

##### **Appendixes**

Appendix A: Data Dictionary

**GET API for employee Pay Distribution & Pay Distribution ID - UK**

# About this API

## Process Overview

The following table shows how your data connector application would be used by a client.

	Actor	Task Description
1	Client Practitioner	Trigger the API-based data exchange between your application and ADP iHCM.
2	Your application	Retrieve Pay Distribution notifications for you to collect changes and make updates in your system according to your needs, the Pay Distribution data is then synchronised between ADP iHCM and your application.
3	Your application	Retrieve Pay Distribution data per associateID and allows you to make updates in your system according to your needs, so the Pay Distribution data is synchronised between ADP iHCM and your application.
4	Client Practitioner	Verify the Information in ADP iHCM2

## What's New in this guide

In this section we will announce any new revisions to the Pay Distribution API Guide.

	Date	Description	Section
1	01/03/2022	Creation	
2	18/07/2022	Paths updated	Use Case: Retrieving all the Pay Distribution details added for an employee from iHCM
3	18/07/2022	Paths updated	Use Case: Synchronising Pay Distribution using Notifications
4	01/03/2023	Additional APIs	Use Case: Retriving Pay Distribution for an employee via the unique ID
5	01/03/2023	Additional APIs	Use Case: Creating & Updating Pay Distribution details

## Postman Collection

Postman allows you to import a collection of APIs, created by others, so you can try them out. For more information on Postman, see [Making Your First API Call Using Postman](#).

To download API collections for the Pay Distribution API from the ADP GitHub library and import them to Postman, go to [Pay Distribution API Postman Collection](#)

## Before You Begin

ADP provides a comprehensive set of Pay Distribution APIs to ensure your application is synchronised with iHCM when the below actions are applied:

- Currently supported for all iHCM Context except for Germany

The amount of data retrieved by your application may vary based on the target ADP system and the ADP system configurations. Additionally, API controls are in place allowing you to select or filter the requested data based on your needs.

### Chapter 2

## Use Case: Retrieving all the Pay Distribution details added for an employee from iHCM

### Use Case Description

The Pay Distribution APIs is used to fetch the details of all Pay Distributions from iHCM for a specific employee for a specific client.

### API Usage

Method		Use Case	Uniform Resource Identifier (URI)	Description	GitHub Sample Response Payload
GET	UK	When you want to update your application with the current Pay Distribution for an associate in iHCM	/payroll/v2/workers/[aoid]/pay-distributions	Returns you all pay distributions available for the associateID you have requested	pay-distribution-UK-http-200-response.json
GET	Non-UK	When you want to update your application with the current Pay Distribution for an associate in iHCM	/payroll/v2/workers/[aoid]/pay-distributions	Returns you all pay distributions available for the associateID you have requested	pay-distribution-Non-UK-http-200-response.json

## Application Scope

The canonical URI corresponding to the API needs to be added in the Consumer Application Registry (CAR) for the subscription following which a user can access this API and make successful Calls

The following canonical needs to be added to your application scope to enable this use case:

**/payroll/payrollManagement/payrollInstructionManagement/payDistributionManagement/ worker.payDistribution.read**

## Request End Point Parameter

path parameter	description
Associate Object ID (AOID)	Associate ID of the employee (for a specific employee) or the manager (for a team)

## Supported OData Query Options

There is no support for OData parameters

## Data Entitlements

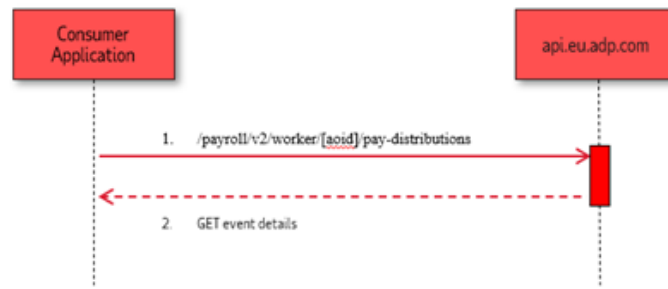
Is important to consider that the API results are bound to the consumer's rights and population

Every consumer is part of a population where he had the right to access associate's data. If the request is being made for an associate that doesn't belong to the population than an error response will be returned

## Sequence of Interactions

The following are the sequence of interactions to retrieve full worker information for a collection of workers:

1. Your consumer application makes a request to the ADP API endpoint to GET the Pay Distribution information.
2. The ADP API endpoint responds to your consumer application with Pay Distribution reequest information according to the Data entitlement



## Data Dictionary

See Appendix A: Data Dictionary on page for data retrieval.

note: All listed fields are supported for this use case.

## Responses

You may encounter exceptions outside your common success scenarios. You must account for these exceptions during your initial development. For more information, see [API Common exceptions and Tips for Handling](#)

### Chapter 3

## Use Case: Retrieving the Pay Distribution details for an employee with a Pay Distribution ID from iHCM

### Use Case Description

When I want to update my non-iHCM application with an employees specific bank details

Then I will call the GET Pay Distribution API with the Relevant item ID via marketplace

and update the relevant employees in my non-iHCM Application

### API Usage



Method	Country	Use Case	Uniform Resource Identifier (URI)	Description	GitHub Sample Response
GET	UK	The one when you want to collect an employee specific pay distribution details when you know the ID	<a href="#">/payroll/v2/workers/{aoid}/pay-distributions/{pay-distribution-id}</a>	Returns you the pay distribution information available for this country for this employee based on a specific ID	Coming Soon
GET	NL	The one when you want to collect an employee specific pay distribution details when you know the ID	<a href="#">/payroll/v2/workers/{aoid}/pay-distributions/{pay-distribution-id}</a>	Returns you the pay distribution information available for this country for this employee based on a specific ID	Coming Soon

## Application Scope

The canonical URI corresponding to the API needs to be added in the Consumer Application Registry (CAR) for the subscription following which a user can access this API and make successful Calls

The following canonical needs to be added to your application scope to enable this use case:

**`/payroll/payrollManagement/payrollInstructionManagement/payDistributionManagement/ worker.payDistribution.read`**

## Request End Point Parameter

Path parameter	Description
Associate Object ID (AOID)	Associate ID of the employee (for a specific employee) or the manager (for a team)
Item ID	The unique identifier of the data you are retrieving or updating

## Supported OData Query Options

There is no support for OData parameters

## Data Entitlements

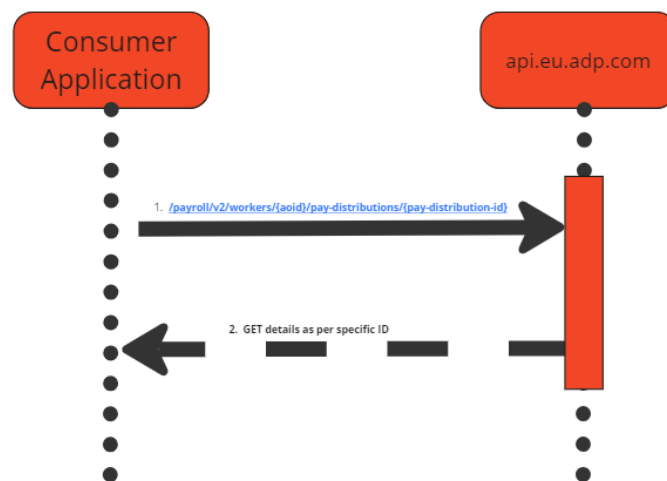
Is important to consider that the API results are bound to the consumer's rights and population

Every consumer is part of a population where he had the right to access associate's data. If the request is being made for an associate that doesn't belong to the population than an error response will be returned

## Sequence of Interactions

The following are the sequence of interactions to retrieve full worker information for a collection of workers:

1. Your consumer application makes a request to the ADP API endpoint to GET the Pay Distribution information.
2. The ADP API endpoint responds to your consumer application with Pay Distribution request information according to the data entitlement



## Data Dictionary

See Appendix A: Data Dictionary on page for data retrieval.

note: All listed fields are supported for this use case.

## Responses

You may encounter exceptions outside your common success scenarios. You must account for these exceptions during your initial development. For more information, see [API Common exceptions and Tips for Handling](#)

## Chapter 4

# Use Case: Synchronising Pay Distribution using Notifications

## Use Case Description

Your application should subscribe to and process the following event notifications to synchronise data in the event of data changes in the ADP iHCM system. The changes described in the following table trigger event notification messages for the Pay Distribution API

## API Usage

Method	Use Case	Uniform Resource Identifier (URI)	Description	GitHub Sample Response Payload
GET Events	When a Pay Distribution for an employee is added in iHCM and you want to update your application then a notification is available for you to collect the details	/events/payroll/v1/workers.pay-distribution.change	Returns you a notification of the associateID who has a new Pay Distribution	<a href="#">pay-distribution-events-change-notification-http-200-response.json</a>
	When a Pay Distribution for an employee are changed in iHCM and you want to update your application then a notification is available for you to collect the details			

## Chapter 5

# Use Case: Creating & Updating the Pay Distribution details for an employee in iHCM

## Use Case Descripton

### Use Case 1

When I want to create a new pay distribution for an employee in iHCM from my non iHCM application

Then I will send the correct AOID

And NO Item ID

And the Correct required data to ADD a new Pay Distribution for my employee in iHCM

## Use Case 2

When I want to update a existing pay distribution for an employee in iHCM from my non iHCM application

Then I will send the correct AOID

And the correct Item ID

And the correct required data to update the existing Pay Distribution for my employee in iHCM

## API Usage

Method	Country	Use Case	Uniform Resource Identifier (URI)	Description	GitHub Sample Request Body	GitHub Sample Response
POST	UK	The one when you want to create a pay distribution for an employee with their AOID	<b>/events/payroll/v1/worker.pay-distribution.change</b>	Add a new Pay Distribution	Coming Soon	Coming Soon
POST	UK	The one when you want to update an existing pay distribution for an employee with their AOID and the specific Pay Distribution ID	<b>/events/payroll/v1/worker.pay-distribution.change</b>	Update an existing Pay Distribution	Coming Soon	Coming Soon

## Application Scope

The canonical URI corresponding to the API needs to be added in the Consumer Application Registry (CAR) for the subscription following which a user can access this API and make successful Calls

The following canonical needs to be added to your application scope to enable this use case:

**/payroll/payrollManagement/payrollInstructionManagement/payDistributionManagement/worker.payDistribution.change**

## Request End Point Parameter

Path parameter	Description
Associate Object ID (AOID)	Associate ID of the employee (for a specific employee) or the manager (for a team)
Item ID	The unique identifier of the data you are retrieving or updating

## Supported OData Query Options

There is no support for OData parameters

## Data Entitlements

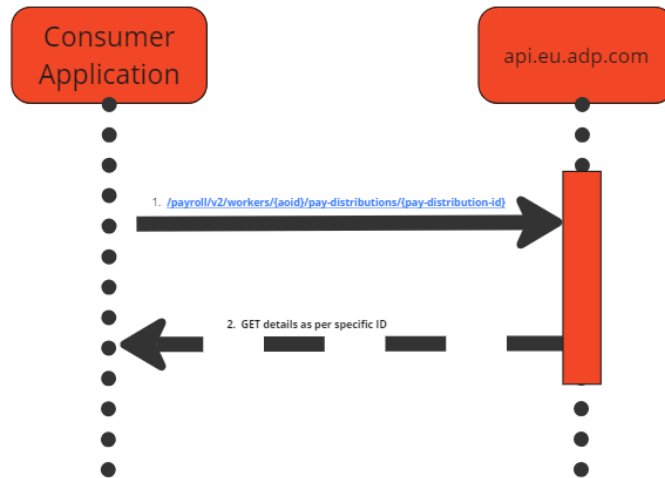
Is important to consider that the API results are bound to the consumer's rights and population

Every consumer is part of a population where he had the right to access associate's data. If the request is being made for an associate that doesn't belong to the population than an error response will be returned

## Sequence of Interactions

The following are the sequence of interactions to retrieve full worker information for a collection of workers:

1. Your consumer application makes a request to the ADP API endpoint to GET the Pay Distribution information.
2. The ADP API endpoint responds to your consumer application with Pay Distribution request information according to the data entitlement



## Data Dictionary

See Appendix A: Data Dictionary on page for data retrieval.

note: All listed fields are supported for this use case.

## Responses

You may encounter exceptions outside your common success scenarios. You must account for these exceptions during your initial development. For more information, see [API Common exceptions and Tips for Handling](#)

## Chapter 6

# Appendixes

## Appendix A: Data Dictionary

The data dictionary provides the schema resource to application user interface field mapping.

## GET API for employee Pay Distribution & Pay Distribution ID - UK

Type of API	API End Point
GET	/payroll/v2/worker/{aoid}/pay-distributions
GET	/payroll/v2/workers/{aoid}/pay-distributions/{pay-distribution-id}

Canonical Field	Description	iHCM Field	Notes
payDistributions[]/itemID			
payDistributions[]/distributionInstructions/itemID	The unique identifier of the object in a collection		
payDistributions[]/distributionInstructions/precedenceCode/codeValue	The code for the related entity	Priority account	
payDistributions[]/distributionInstructions/paymentMethodCode/codeValue	Payment code	Payment method (Code)	D = Bacs Q=Cheque C=Cash H=Chaps
payDistributions[]/distributionInstructions/paymentMethodCode/shortName	Payment Description	Payment Method (Description)	
payDistributions[]/distributionInstructions/depositAccount/financialParty/nameCode/shortName	Bank Name	Bank Name	
payDistributions[]/distributionInstructions/depositAccount/financialParty/address/lineOne	Line One of Street Address Information	Bank Address Line 1	Not Visible in the UI (Output if added in set-up screen)
payDistributions[]/distributionInstructions/depositAccount/financialParty/address/lineTwo	Line Two of Street Address Information	Bank Address Line 2	Not Visible in the UI (Output if added in set-up screen)
payDistributions[]/distributionInstructions/depositAccount/financialParty/address/lineThree	Line Three of Street Address Information	Bank Address Line 3	(Not Visible in the UI (Output if added in set-up screen)
payDistributions[]/distributionInstructions/depositAccount/financialParty/address/cityName	A city in the context of an address	Bank Address Name of City	Not Visible in the UI (Output if added in set-up screen)in the UI
payDistributions[]/distributionInstructions/depositAccount/financialParty/address/postalCode	The string of characters used to identify the postal code	Bank Post code	Not Visible in the UI (Output if added in set-up screen)
payDistributions[]/distributionInstructions/depositAccount/financialParty/branchNameCode/codeValue	The code for the related entity	Bank Sort code	
payDistributions[]/distributionInstructions/depositAccount/financialParty/branchNameCode/shortName	Short description of the related code	Bank Branch Name	
payDistributions[]/distributionInstructions/depositAccount/financialAccount/accountNumber	The unique identifier of the account where the monies are to be distributed	Employee Bank Account Number	
payDistributions[]/distributionInstructions/depositAccount/financialAccount/accountName	The name of the related account	Employee Bank Account Name	
payDistributions[]/distributionInstructions/payee/payeeName/givenName	The first name of the person	Employee First Name	

payDistributions[]/distributionInstructions/payee/payeeName/familyName1	Person family name 1	Employee Surname	
payDistributions[]/distributionInstructions/distributionAmount/amountValue	The monetary value of the object in which the amount is associated	The amount to be sent to this current Pay Distribution details	
payDistributions[]/distributionInstructions/distributionPercentage	The percentage of the net pay to be distributed as per the current distribution instruction. Only one value, either amount or percentage or remaining balance indicator (true) should be provided	The percentage to be sent to this current Pay Distribution details	
payDistributions[]/requestedStartDate	The date when the distribution instruction set will become or became effective. May not be the same as the first execution date (payroll date)	The effective from date	
payDistributions[]/payrollFileNumber	The payroll file number	The employees reference number	

#### GET API for employee Pay Distribution & Pay Distribution ID - All Other iHCM countries

Type of API	API end point
GET	/payroll/v2/worker/{aoid}/pay-distributions
GET	/payroll/v2/workers/{aoid}/pay-distributions/{pay-distribution-id}

Canonical Field	Description	iHCM Field	Notes
payDistributions[]/itemID			
payDistributions[]/distributionInstructions/itemID	The unique identifier of the object in a collection		
payDistributions[]/distributionInstructions/depositAccount/financialParty/nameCode/shortName	Bank Name	Bank Name	
payDistributions[]/distributionInstructions/depositAccount/IBAN	International Bank Account Number. The IBAN consists of up to 34 alphanumeric characters: first the two-letter ISO 3166-1 alpha-2 country code, then two check digits, and finally a country-specific Basic Bank Account Number (BBAN). The check digits enable a sanity check of the bank account number to	IBAN	



	confirm its integrity even before submitting a transaction.		
payDistributions[]/distributionInstructions/depositAccount/financialParty/nameCode/shortName	Name of the Bank	Banking Organisation Name	
payDistributions[]/distributionInstructions/depositAccount/financialParty/SWIFTCode	Identifies a standard format of Business Identifier Codes approved by the International Organization for Standardization (ISO). It is a unique identification code for both financial and non-financial institutions. The acronym SWIFT stands for the Society for Worldwide Interbank Financial Telecommunication. The SWIFT code consists of 8 or 11 characters. When 8-digits code is given, it refers to the primary office. First 4 characters - bank code (only letters), next 2 characters - ISO 3166-1 alpha-2 country code (only letters), next 2 characters - location code (letters and digits) (passive participant will have 1 in the second character). Last 3 characters - branch code	Swift	
payDistributions[]/distributionInstructions/depositAccount/financialAccount/accountName	The name of the related account	Employee Bank Account Name	
payDistributions[]/distributionInstructions/payee/payeeName/givenName	The first name of the person	Employee First Name	
payDistributions[]/distributionInstructions/payee/payeeName/familyName1	Person family name 1	Employee Surname	
payDistributions[]/requestedStartDate	The date when the distribution instruction set will become or became effective. May not be the same as the first execution date (payroll date)	The effective from date	
payDistributions[]/payrollFileNumber	The payroll file number	The employees reference number	

#### POST API for employee Pay Distribution - UK

Type of API	API End Point
POST	/events/payroll/v1/worker.pay-distribution.change

--	--

Canonical Field	Description	iHCM Field	Notes
/events/data/eventContext/worker/associateOID	A unique identifier of an employee	Not Visible in the UI	This value is required This value is generated from iHCM when a user is created * if AOID is not available then a user must be created in iHCM to generate the AOID
/events/data/eventContext/payDistribution/itemID	The unique identifier of the pay distribution within a collection (Primary Key)	Not Visible in the UI	1) To create a new Pay Distribution No Value is required 2) This value is created when you create a Pay Distribution for an employee either via a POST or via the UI 3) This value can be collected from the GET Pay Distribution API 4) this value is required when you want to update a Pay Distribution
/events/data/transform/payDistribution/distributionInstructions/instructionEffectivePeriod/startDateTime	The Effective From Date of the Pay Distribution	Effective From	* Date is in the ISO-8601:2000 format
/events/data/transform/payDistribution/distributionInstructions/instructionEffectivePeriod/endDateTime	The Effective To Date of the	Effective To	* Date is in the ISO-8601:2000 format
/events/data/transform/payDistribution/distributionPurposeCode/codeValue	Adds an Expenses reimbursement	Expenses Indicator	*Post API field value is "EXPENSE" Priority is auto set to 9
/events/data/transform/payDistribution/distributionInstructions/precedenceCode/codeValue	Priority for the Pay Distribution	Priority	1-9 *Employee can only have 1 priority
/events/data/transform/payDistribution/distributionInstructions/paymentMethodCode/codeValue	Code for Payment type	Not visible in UI but linked to Pay method	C = Cash D = BACS H = CHAPS Q = Cheque * The above can only be sent if that payment type is used/activated for the client
/events/data/transform/payDistribution/distributionInstructions/paymentMethodCode/shortName	Description for payment type	Pay Method	C = <b>Cash</b> D = <b>BACS</b> H = <b>CHAPS</b> Q = <b>Cheque</b> * The above can only be sent if that payment type is used/activated for the client

/events/data/transform/payDistribution/distributionInstructions/depositAccount/financialParty/nameCode/shortName	Name Of Bank	Bank Name	This field can be skipped
/events/data/transform/payDistribution/distributionInstructions/depositAccount/financialParty/branchNameCode/codeValue	Employee Bank Sort Code	Sort Code	Format = NNNNNN Max 6 Numeric Only * MUST be a valid UK Sort Code
/events/data/transform/payDistribution/distributionInstructions/depositAccount/financialAccount/accountNumber	Employee Bank Account Nbr	Account Nbr	Format - NNNNNNNN Max 8 Numeric only * Account nbr MUST link to bank sort code
/events/data/transform/payDistribution/distributionInstructions/depositAccount/financialAccount/accountName	Employee name on bank account	Account Name	Employee name i.e "Mr Kyle Broski" Max 40 Characters *Anything above will be truncated
/events/data/transform/payDistribution/distributionInstructions/depositAccount/financialAccount/rollNumber	If Pay Distribution is to a Building Society additional reference number is required	Roll Number (Building Society Roll Number)	Format - AlphaNumeric Max 18 Characters *Anything above will be truncated
/events/data/transform/payDistribution/distributionInstructions/distributionAmount/amountValue	The set amount of money that should be paid into the account	Amount	Formay - NNNNNN.NN
/events/data/transform/payDistribution/distributionInstructions/distributionPercentage	The percentage of an employee's salary that should be paid into the account	Percentage	Format - NNN *If the payroll percentage is specified then the total must equate to less than or equal to 100 over all bank detail records for the employee.
/events/data/transform/payDistribution/distributionInstructions/remainingBalanceIndicator	The remainder value of pay to be paid into this account Example Pay Distribution 1 = 100.00 amount Pay Distribution 2 = Remainder	Remainder	True/False
/events/data/output/worker/associateOID	A unique identifier of an employee	Not visible in the UI	This value is required This value is generated from iHCM when a user is created * if AOID is not available then a user must be created in iHCM to generate the AOID

#### General guidelines - POST API for employee Pay Distribution - UK

Senario	Action
The one where the Account Name is greater than 40 characters	Name will be truncated to 40

	characters
The one where the bank account must meet the sort code validation	If there is a mismatch 400 Bad request will be produced - Message: The account number is not valid for this sort code
The one where the Account Nbr must be Numeric and not greater than 8 digits	Message: Error in Bank Details.The account number is not valid for this sort code. Check the sort code and account number and correct as necessary.Bank Account Number must be numeric and it should be a 8 digit number
The one where we can only set priority between 1-9	<b>Message:</b> Error in Bank Details.The data in the PRIORITY fields should be between 1 and 9
The one where the percentage cannot be over 100	Message: Error in Bank Details.The total percentage of disbursements for this payslip exceeds the maximum 100%.
The one where the Roll Nbr cannot exceed 18 Characters	Anything over will be truncated
The one where Pay Method does not exist	Invalid lookup/picklist value or incorrect metadata
The one where Sort code is not found in the database	Error in Bank Details.An invalid bank sort code has been entered
The one where the effective to date must be on or after the effective from date	The 'Effective To' date must be on or after the 'Effective From' date
The one where you cannot add a percentage AND an amount	Either Amount or Percentage can be entered but not both.
The one where Effective From date is mandatory	Bank Detail 'Effective From' field is Mandatory